

25 | Saving

25.1	Setting Guide	25-2
25.2	Import/Export Nodes and Symbols	25-7

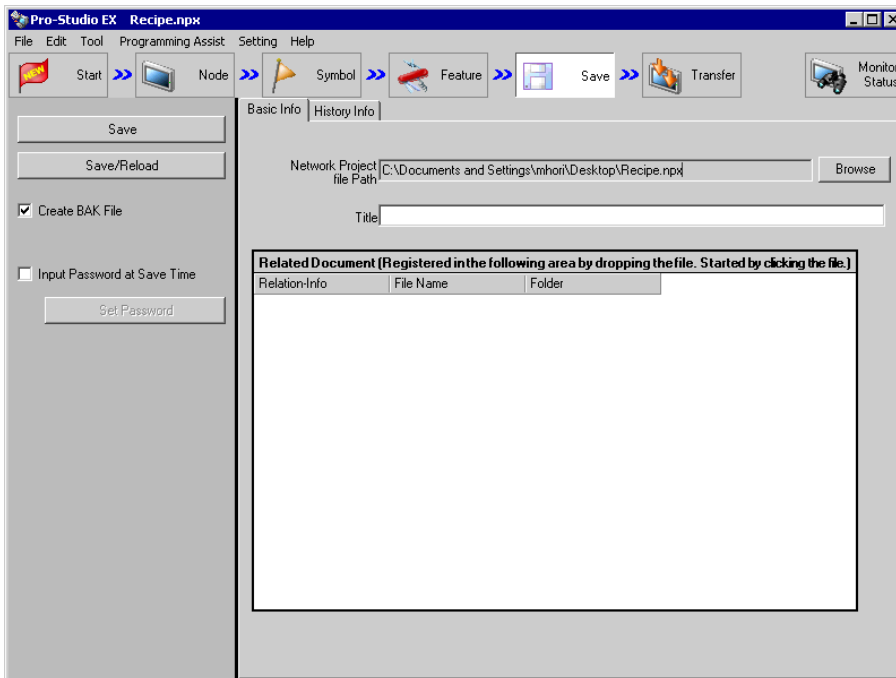
25.1 Setting Guide

When you finish the settings of the entry node(s), symbol(s) and function(s), save these set data as a "Network Project File".

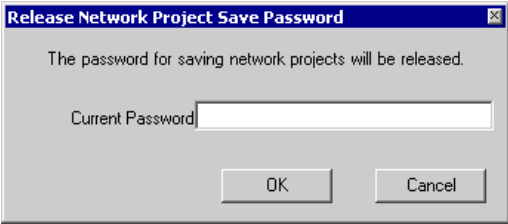
'Pro-Server EX' reads (or reloads) this network project file, and then executes each ACTION.

Therefore, it is required to save and reload the data specified on 'Pro-Studio EX' as a network project file.

■ "Basic Info" Tab

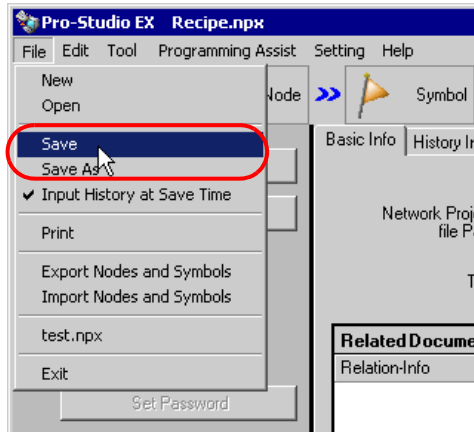


Setting item	Setting content
Save	<p>Saves a network project file.</p> <p>NOTE</p> <ul style="list-style-type: none"> When overwriting the data in an existing network project file, no dialog box confirming the overwriting appears.
Save/Reload	<p>Saves a network project file and reloads.</p> <p>'Pro-Server EX' reads the contents stored in a network project file and performs operation according to the specification in this file.</p>
Create BAK File	<p>Check this when you wish to create the backup file of a network project file.</p> <p>NOTE</p> <ul style="list-style-type: none"> A backup file is created on the same location as the network project file, with the "*.npx.bak" extension. It is possible to edit the backup file but you cannot save the contents. Change the name and extension to save the file after editing.

Setting item	Setting content
<p>Input Password at Save Time</p>	<p>Check this if you wish to set password control when saving a network project file. When this setting becomes effective, the following password entry screen appears when saving a network project file.</p>  <p>NOTE</p> <ul style="list-style-type: none"> This setting protects the unauthorized overwriting of network project files for security.
<p>Set Password</p>	<p>The "Set Password" screen appears. You can newly set or change a password on this screen. Refer to "■ "Set Password" Screen" for more details.</p>
<p>Network Project file Path</p>	<p>Specifies the saving destination and file name of a network project file. Clicking the [Browse] button displays the "Save As" screen, where you can specify the saving destination and file name of the network project file to save by clicking the [Save] button.</p>
<p>Title</p>	<p>Enter a network project file title.</p>
<p>Related Document</p>	<p>You can register an optional related document file in the network project file to be saved. You can register the file name and folder name by dragging and dropping a file to be registered into this area. Click the [Relation-Info] field and enter the related information (comment). Clicking the file name opens the file.</p> <p>NOTE</p> <ul style="list-style-type: none"> The related document is controlled with a file path. When this file is moved after the registration, you must register it again. You cannot edit or delete but add the document.

NOTE

- It is also possible to save a network project file by selecting [Save] or [Save as] from the [File] menu.



If you have checked [Input History at Save Time] in the following dialog box or of the [File] menu, the "Register File-Related Info" screen appears each time you save a network project file from the [File] menu.

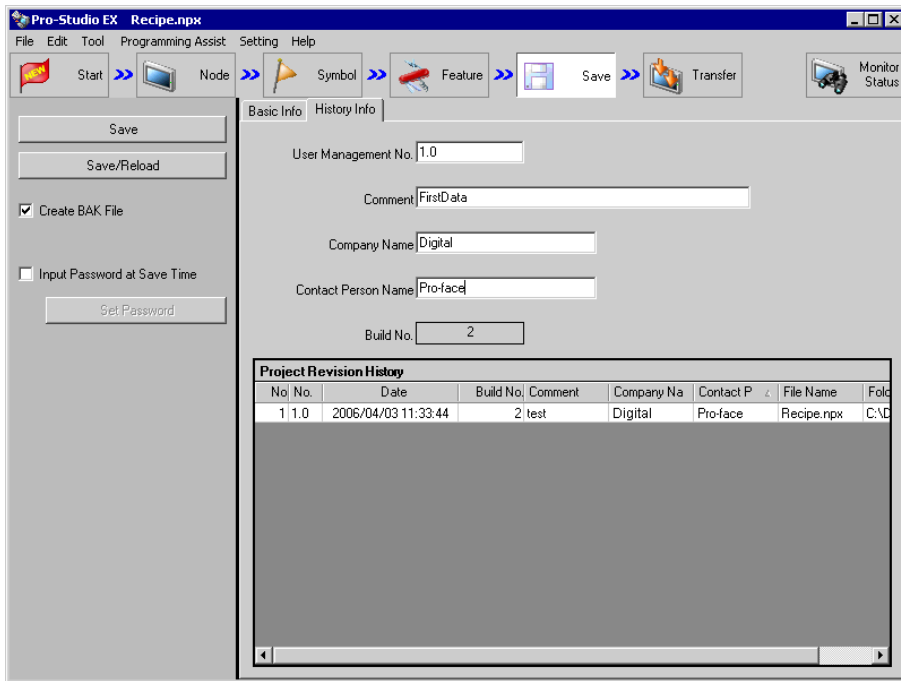
The contents of this screen are the same as those in the [History Info] tab shown in the next section. Specify the necessary items and click the [Register] button to save the file.

You can also select whether or not the "Register File-Related Info" screen appears when saving a file from the menu, using the [Input History at Save Time] check box on this screen.

A screenshot of the "Register File-Related Info" dialog box. It contains the following fields and controls:

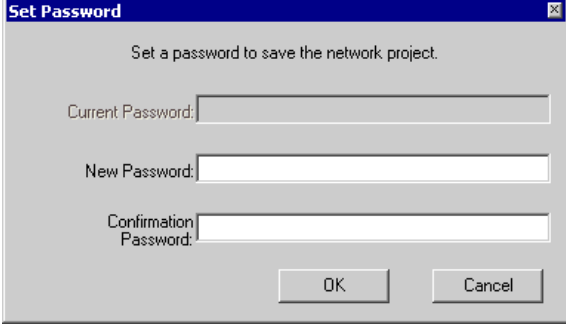
- User Management No.: 1.0
- Comment: First Data
- Company Name: Pro-face
- Contact Person Name: (empty)
- Build No.: 2
- Input History at Save Time
- Buttons: Register, Cancel

■ "History Info" Tab



Setting item	Setting content
User Management No.	<p>Enter an optional control number (like a version).</p> <p>NOTE</p> <ul style="list-style-type: none"> User management number is intended for optional version control of network project file by users. And the version upgrading and downgrading are not automatically controlled.
Comment	<p>Enter comments related to history.</p>
Company Name	<p>Enter a company name.</p> <p>NOTE</p> <ul style="list-style-type: none"> By default, displays the name of the company registered at OS installation.
Contact Person Name	<p>Enter the name of a contact person.</p> <p>NOTE</p> <ul style="list-style-type: none"> By default, displays the user name registered at OS installation.
Build No.	<p>This number is determined automatically in a network project file, and increases by 1 count each time you save a network project file after changing the contents.</p> <p>NOTE</p> <ul style="list-style-type: none"> Build numbers are repeated in the range of 1 to 2147483646.
Project Revision History	<p>Displays the revision history of the information in a network project file. If there is any change to User Management Number, Comment, Company Name, Contact Person Name, File Name or Folder, the history data is to be added.</p>

■ "Set Password" Screen



Set a password to save the network project.

Current Password:

New Password:

Confirmation Password:

OK Cancel

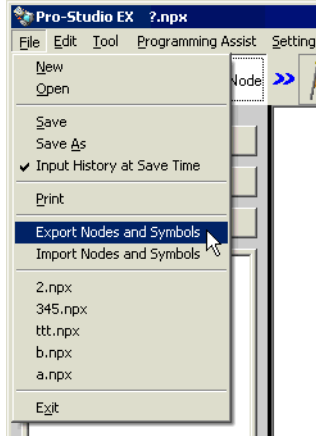
Setting item	Setting content
Current Password	Displays the currently set password in "*****".
New Password	Enter the password you wish to newly set or change. NOTE <ul style="list-style-type: none">• If you leave this field blank, password protection becomes invalid.
Confirmation Password	Enter the same password as that in [New Password] for confirmation.

25.2 Import/Export Nodes and Symbols

Nodes and Symbols can be imported / exported in csv form. It is convenient to check the case where many symbols are edited, Nodes and Symbols by list in order to export in csv form using Excel.

You can click [Export Nodes and Symbols] from the [File] menu to output the node and symbol information in a CSV format file.

To import the edited CSV file, click [Import Nodes and Symbols] from the [File] menu and specify the corresponding CSV file.



It is outputted in the following form.

	A	B	C	D	E
1	<NPX>	Format4	ProjectID 1194992173	Version 5.2.0	
2					
3	<GlobalDefinition>	Constant Name	Value	Comment	
4		Global1		100	Comment1
5		Global2		200	Comment2
6					
7	<NodeProperty>	Node Name	IP Address	Subnet Mask	Gateway
8		PC1	192.168.0.1	0.0.0.0	0.0.0.0
9					
10	<NodeProperty>	Node Name	IP Address	Subnet Mask	Gateway
11		ACP1	192.168.0.100	0.0.0.0	0.0.0.0
12	<ConnectDriver>	Maker Name	Device Type	Port Type	Port No.
13		Mitsubishi Electric Corporation	A Series CPU Direct	COM	1
14	<ConnectPLC>	Device Name	Model	Outline of Device Settings	Device/PLC Se
15		PLC1		0 Series=AnA Series	[node]\nnode
16					
17					
18	<SymbolSheet>	Symbol Sheet Name	Symbol Type (Global/Local)	Node Name	Device/PLC Na
19		Sheet1	Local	PC1	#INTERNAL
20	<Symbol>	Attribute (Begin/End/Symbol)	Symbol Name	Data Type (1-12)	Consecutive or
21					
22	<SymbolSheet>	Symbol Sheet Name	Symbol Type (Global/Local)	Node Name	Device/PLC Na
23		Sheet2	Local	ACP1	#INTERNAL

NOTE • If you cannot import, refer to "■ CSV Format File".

■ CSV Format File

If you select [Export Nodes and Symbols], CSV files (comma-delimited text) including the following information are exported.

- NOTE** • To support Ethernet/IP of Rockwell Automation, the CSV format has changed from that in the old version (V1.22 or earlier) of 'Pro-Studio EX'. When you import the CSV format file exported using the old version, refer to the following and correct the CSV file.

Network Project (NPX) Information		Global Constant Information		Node and Device/ PLC Information	
A	B	C	D	E	
1	<NPX>	Format4	ProjectID 1194992173	Version 5.2.0	
3	<GlobalDefinition>	Constant Name	Value	Comment	
4		Global1	100	Comment1	
5		Global2	200	Comment2	
7	<NodeProperty>	Node Name	IP Address	Subnet Mask	Gateway
8		PC1	192.168.0.1	0.0.0.0	0.0.0.0
10	<NodeProperty>	Node Name	IP Address	Subnet Mask	Gateway
11		AGP1	192.168.0.100	0.0.0.0	0.0.0.0
12	<ConnectDriver>	Maker Name	Device Type	Port Type	Port No.
13		Mitsubishi Electric Corporation	A Series CPU Direct	COM	1
14	<ConnectPLC>	Device Name	Model	Outline of Device Settings	Device/PLC Setting Info
15		PLC1		0 Series=AnA Series	[node]\nmodel=0
18	<SymbolSheet>	Symbol Sheet Name	Symbol Type (Global/Local)	Node Name	Device/PLC Name
19		Sheet1	Local	PC1	#INTERNAL
20	<Symbol>	Attribute (Begin/End/Symbol)	Symbol Name	Data Type (1-12)	Consecutive or Bit Specif
22	<SymbolSheet>	Symbol Sheet Name	Symbol Type (Global/Local)	Node Name	Device/PLC Name
23		Sheet2	Local	AGP1	#INTERNAL
24	<Symbol>	Attribute (Begin/End/Symbol)	Symbol Name	Data Type (1-12)	Consecutive or Bit Specif
26	<SymbolSheet>	Symbol Sheet Name	Symbol Type (Global/Local)	Node Name	Device/PLC Name
27					

Symbol Information