


23



Enhancing Security

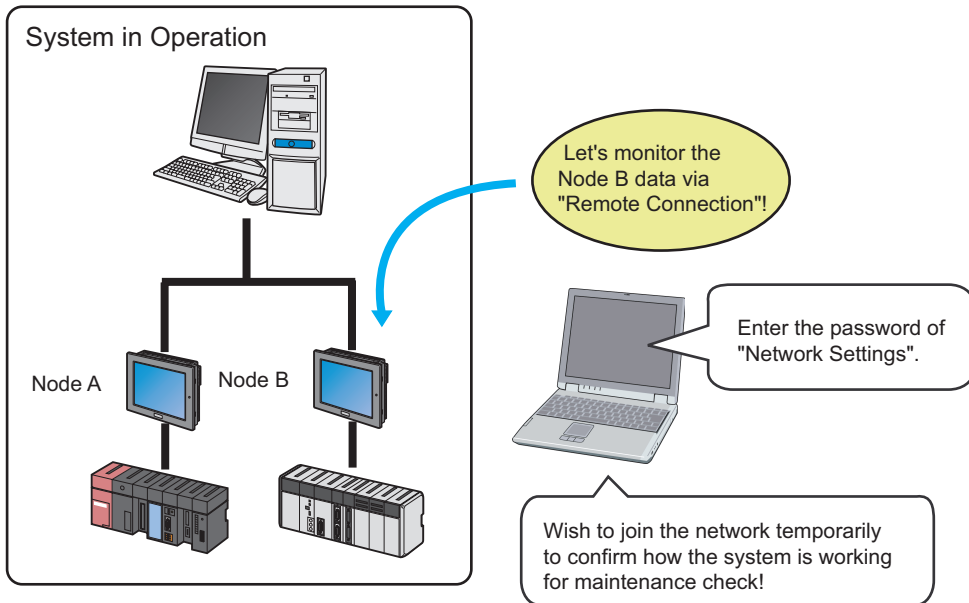
23.1	Blocking Unauthorized Access with Password	23-2
23.2	Blocking Unauthorized Editing with Password	23-7
23.3	Blocking Unauthorized Transfer with Password.....	23-15

23.1 Blocking Unauthorized Access with Password

In order to prevent unauthorized access by a node that has not been registered on the network, you can set a password for the network to enhance the security.  "34.2 Network Setup"

Access from a personal computer outside of the network by entering a password is called "Remote Access".

Remote access allows to access to the node in the network, which is protected by this security function.




The procedures of remote access and cutting are explained below.

NOTE

• 'Pro-Server EX' has 3 security functions as follows:

(1) Protect a device access from a node that has not been registered on the network.


 "23.1 Blocking Unauthorized Access with Password"

(2) Protect unauthorized access when saving a network project file.

Set password protection from [Enter password when saving] on the save screen.

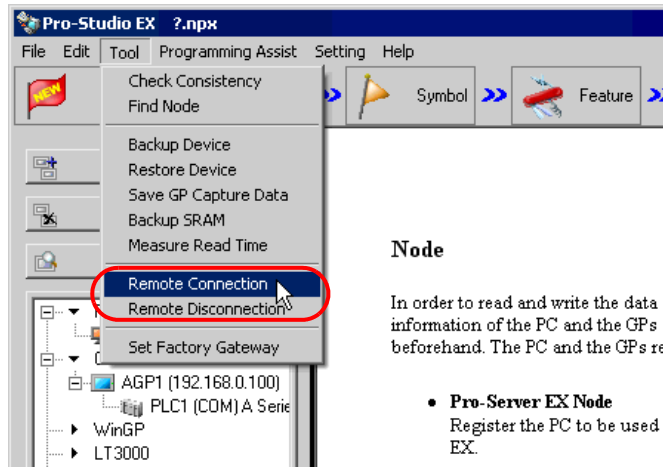
 "23.2 Blocking Unauthorized Editing with Password"

(3) Protect unauthorized access when transferring a network project file to GP.

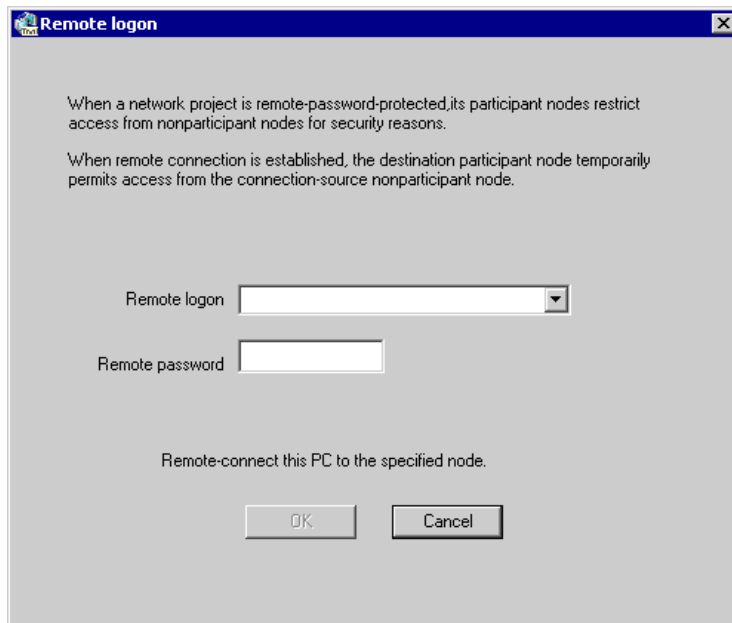
 "23.3 Blocking Unauthorized Transfer with Password" or 'GP-Pro EX Reference Manual'

23.1.1 Remote Access

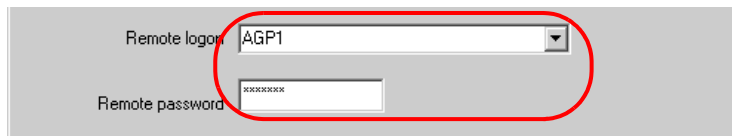
1 Click [Remote Connection] from [Tool] on the menu bar.



The "Remote logon" screen will appear.



2 Click the list button of [Remote logon] and enter the node for remote access and the password.




Remote logon AGP1

Remote password *****

NOTE

- "*****" appears when entering a password.
- The password to be entered is that set in [Setting/Set Network].

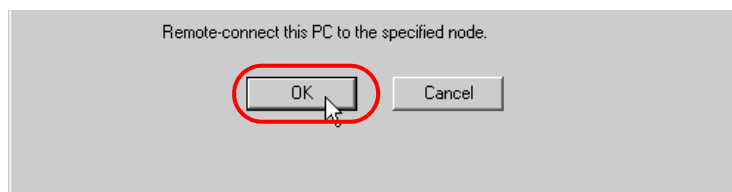


Network Remote Password

Password

Confirm

3 Click the [OK] button.



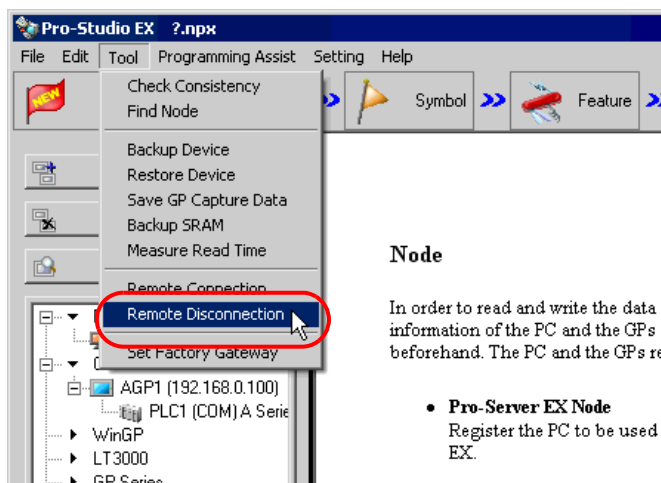
Remote-connect this PC to the specified node.

OK Cancel

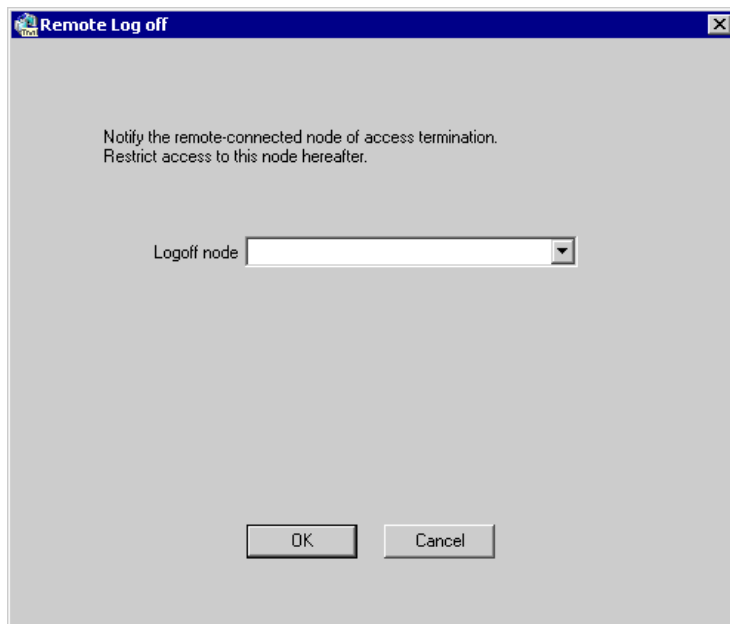
Remote access is performed to the specified node.

23.1.2 Remote Cutting

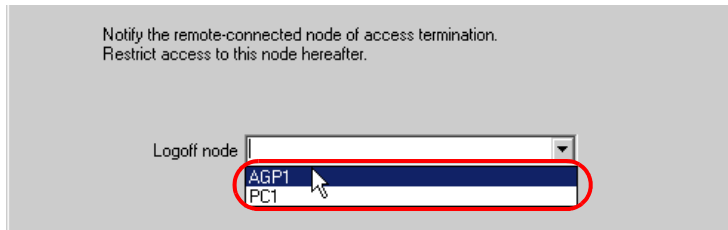
- 1 Click [Remote Disconnection] from [Tool] on the menu bar.



The "Remote Logoff" screen will appear.



- 2 Click the list button of [Logoff node] and select the node for remote cutting. Then click the [OK] button.



Remote access to the specified node is cut.

NOTE

- When Pro-Server EX node and WinGP node work with 1 PC, when remote connection is cut off, because also connection with the WinGP node is cut off in addition to the participation node which is appointed please note.
-

23.2 Blocking Unauthorized Editing with Password

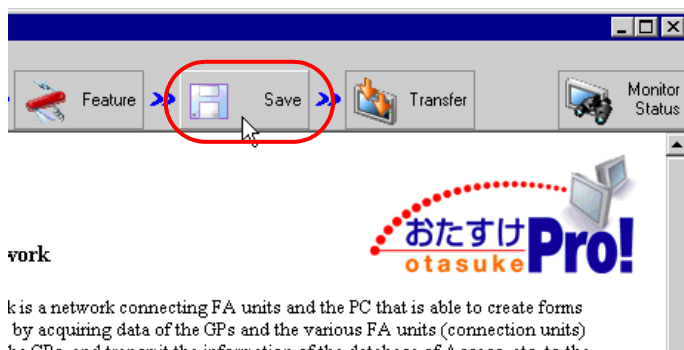
To protect the contents of a network project file, you can set a password when saving a created network project file.

Once a password is set, a password entry screen will appear when saving a network project file after editing. In this case, you cannot save the network project file without entering the correct password.

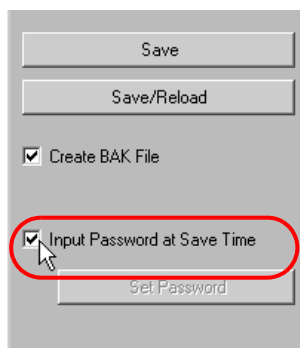
23.2.1 Password Setting for File Saving

This step sets a password when saving a new network project file.

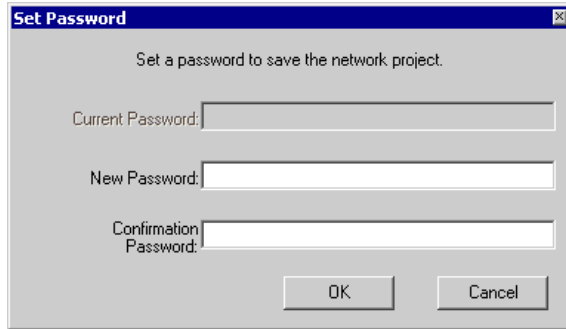
- 1 Create a network project file.
- 2 Click the [Save] icon on the toolbar.



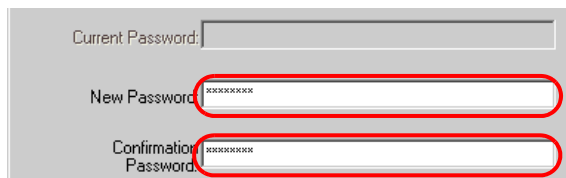
- 3 Check [Input Password at Save Time].



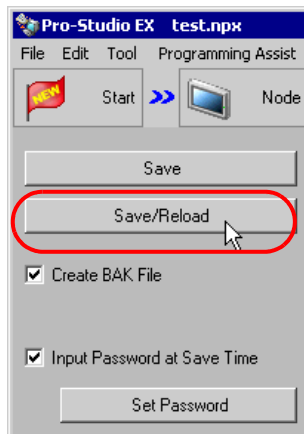
The "Set Password" screen will appear.



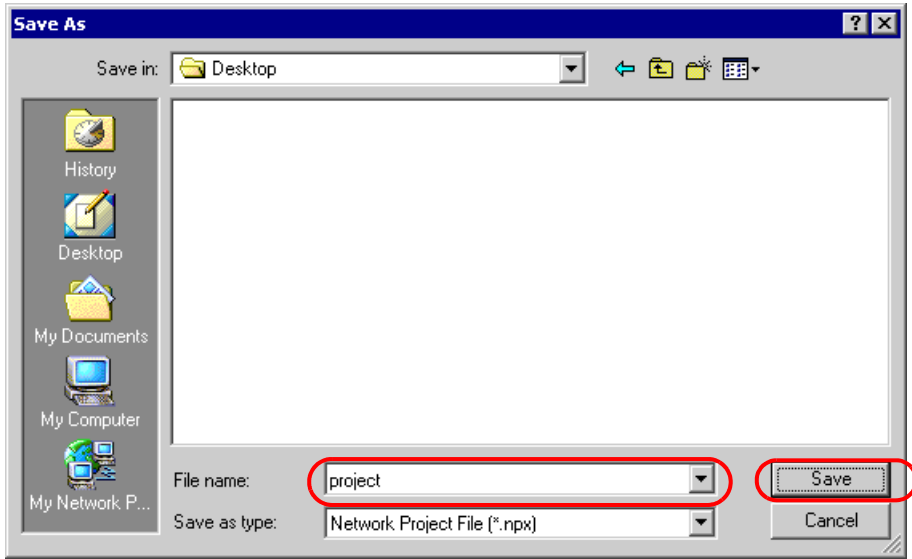
- 4 Enter a password to be set in [New Password] and the same password in [Confirmation Password], and click the [OK] button.



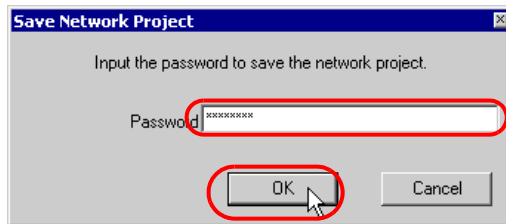
- 5 Click the [Save] or [Save/Reload] button.



6 Enter a file name and click the [Save] button.



7 Enter the password registered and click the [OK] button.

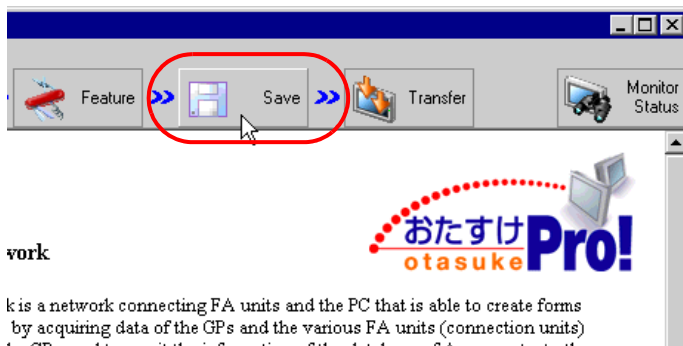


The network project file secured by the password is saved.

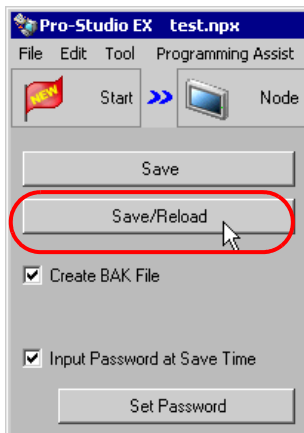
23.2.2 Editing and Saving Network Project having Password Setting

This step edits and saves a network project file having password setting.

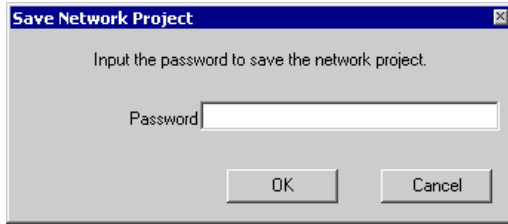
- 1 Edit a network project file.
- 2 Click the [Save] icon on the status bar.



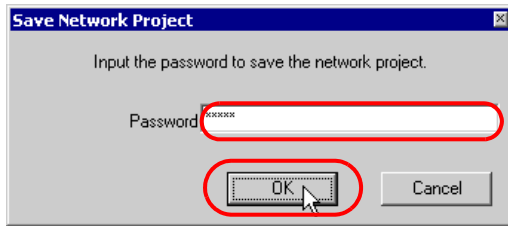
- 3 Click the [Save] or [Save/Reload] button.



The "Save Network Project" screen will appear.

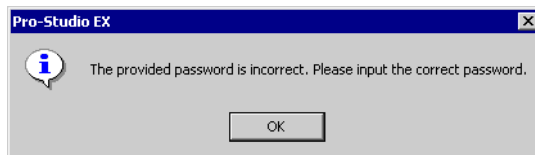


4 Enter the password registered and click the [OK] button.



The edited network project file is saved.

-
- NOTE** • If an incorrect password is entered, the following dialog box will appear.
Click the [OK] button and enter the correct password.



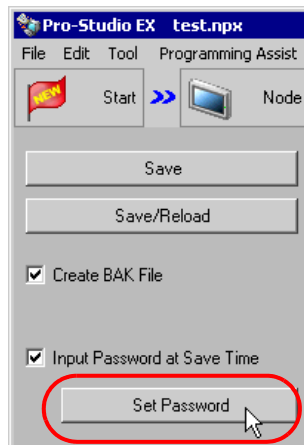
23.2.3 Changing Passwords

This step changes the password specified for a network project file.

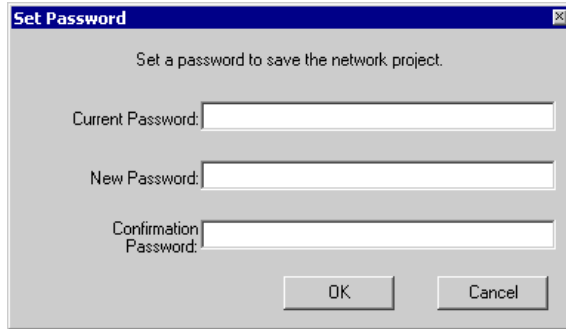
- 1 Open a network project file and click the [Save] button on the toolbar.



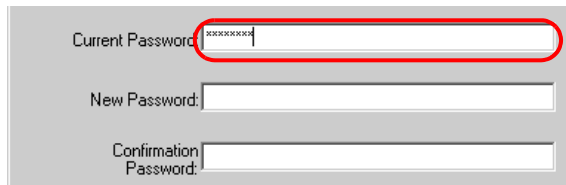
- 2 Click the [Set Password] button.



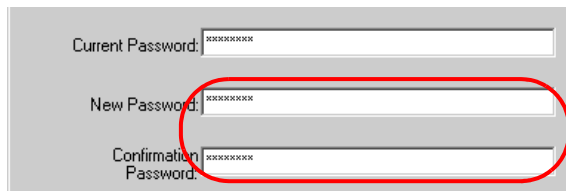
The "Set Password" screen will appear.



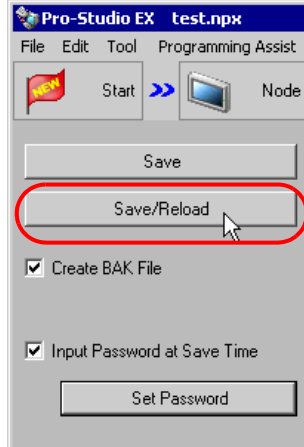
3 Enter the currently registered password in [Current Password].



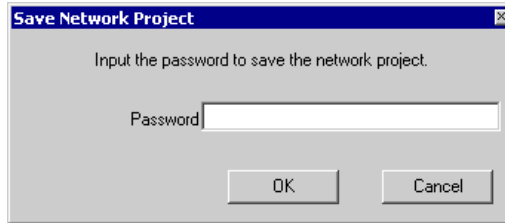
4 Enter a new password to be set in [New Password] and the same password in [Confirmation Password], and click the [OK] button.



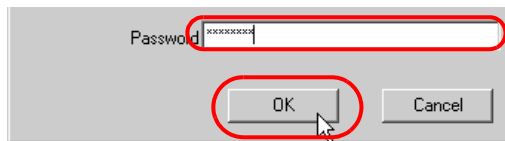
5 Click the [Save] or [Save/Reload] button.



The "Save Network Project" screen will appear.



6 Enter the new password and click the [OK] button.



The network project file secured by the new password is saved.

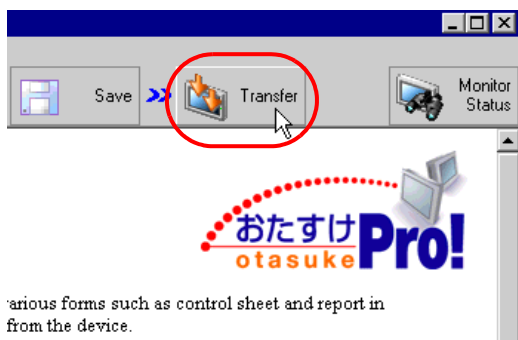
23.3 Blocking Unauthorized Transfer with Password

When a network project file is transferred to GP, enter the password to access if the GP has password protection. Refer to 'GP-Pro EX Reference Manual' about the GP password setting.

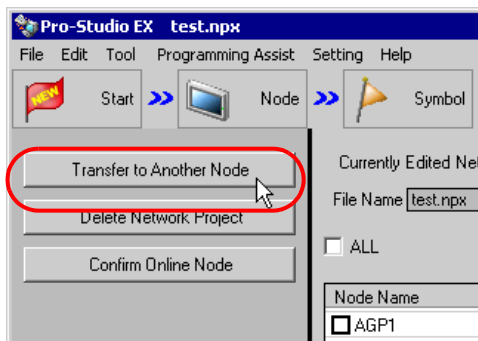
23.3.1 Access to GP Secured by Password

This step enters a password when transferring a network project file.

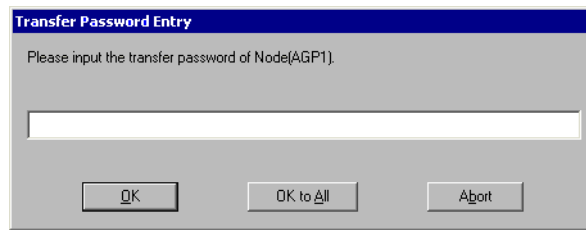
- 1 Create and save a network project file.
- 2 Click the [Transfer] icon on the status bar.



- 3 Specify the node to which the network project file is transferred and click the [Transfer to Another Node] button.



- 4 Enter the password set for GP and click the [OK] button.



The network project file is transferred to the GP secured by the password.

NOTE

- Click the [OK to All] button to apply the password entered here to all the nodes to which the network project file is transferred.
 - Click the [Abort] button to stop password entering and transfer processing.
-