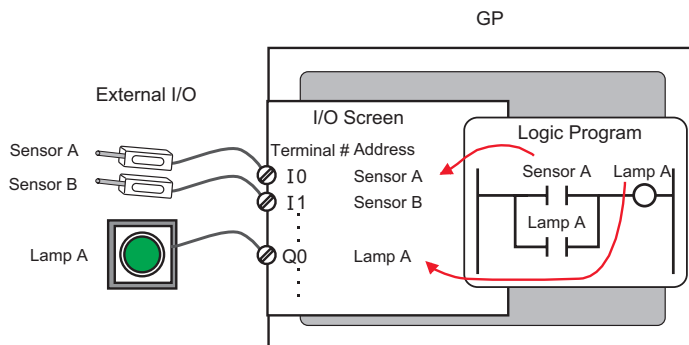


### 30.3 Controlling GP External I/O

#### 30.3.1 Detail

Use the GP internal DIO driver to control GP external inputs and outputs.

There are 6 inputs and 2 outputs.



#### 30.3.2 Setup Procedure

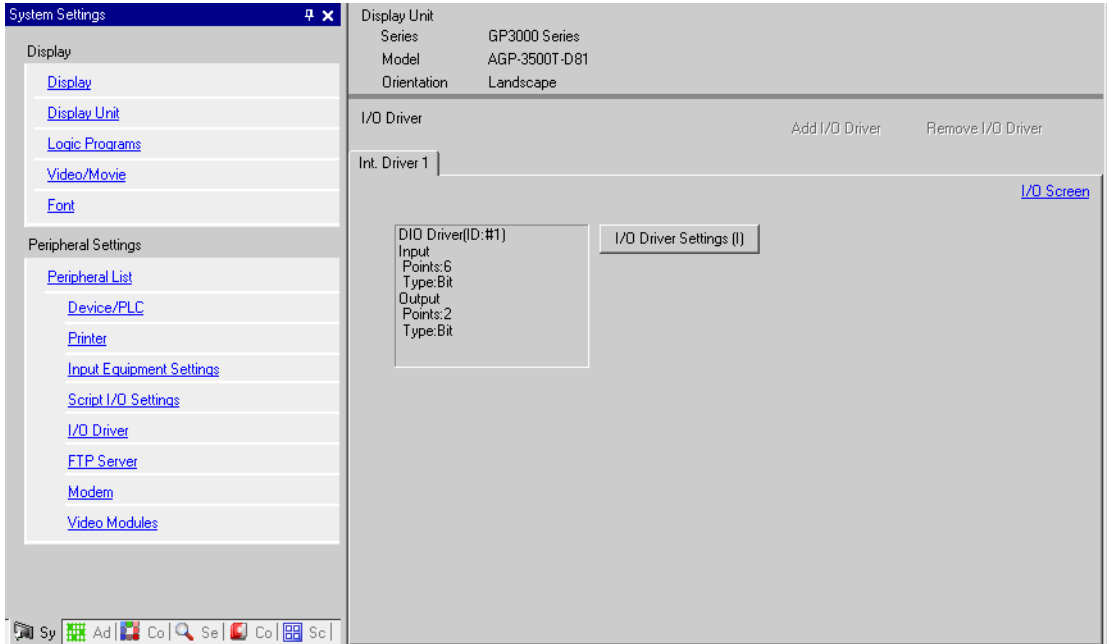
---

**NOTE** • Please refer to the Settings Guide for details.  
 ☞ "30.3.3 [I/O Driver Settings] Setting Guide" (page 30-12)

---

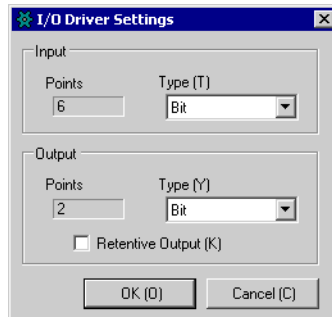
1 When you select AGP-XXXXX-D81 as the display unit, the DIO driver is automatically set up.

2 In the [System Settings] window, select [I/O Driver] to display the following screen.

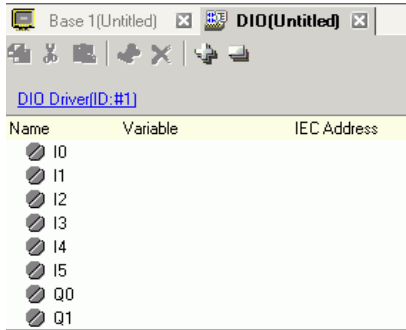


- NOTE**
- If the [System Settings] tab is not displayed in the workspace, on the [View (V)] menu, point to [Workspace (W)], and then click [System Settings (S)].

3 Click [I/O Driver Settings]. In the dialog box that appears, select input and output types and click [OK].



4 Click [I/O Screen] to set up I/O terminals.



---

**NOTE**

- You can also display the I/O Screen from the [Screen List] window.
- 

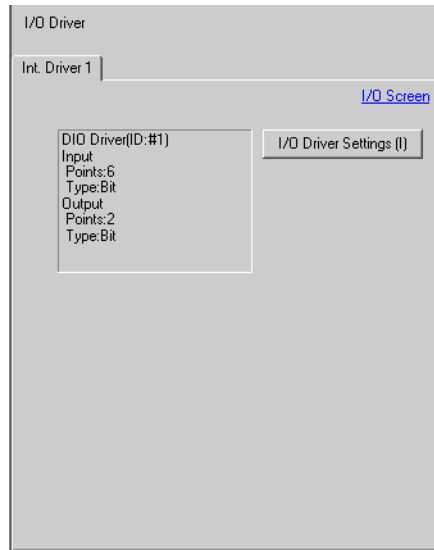
5 Map an address (variable) to each terminal. The following describes how to map addresses.

☞ "30.1.2 Mapping Addresses (variables) to I/O Terminals" (page 30-3)

### 30.3.3 [I/O Driver Settings] Setting Guide

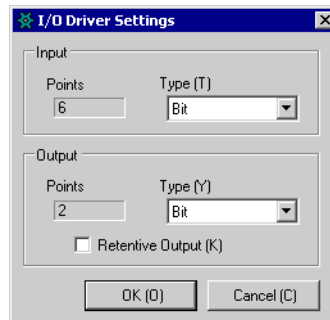
#### ■ DIO Driver

In the [System Settings] window, select [I/O Driver] to display the following screen.



Setting	Description
I/O Driver	This button displays the [I/O Driver Settings] dialog box.
I/O Screen	Click the button to switch to the I/O screen.

#### ◆ I/O Driver Settings



Setting	Description
Input	Select the variable type for the input from either [Bit] or [Word]. The Number of Points is 6 (fixed).
Output	Select the variable type for the output from either [Bit] or [Word]. The Number of Points is 2 (fixed).
Retentive Output	Select whether or not you want to retain output values when the logic is stopped. When this check box is selected, I/O values are retained even when the GP is shut down.