

34



Adjusting the Time and Screen Saver

This chapter describes how to enable, adjust, and disable the time data and screen saver functions.

First, please read "34.1 Settings Menu" (page 34-2) and skip to the relevant pages as required.

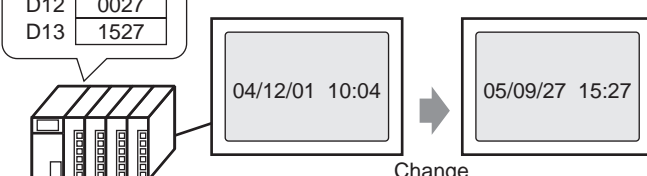
34.1	Settings Menu	34-2
34.2	Adjusting the Time	34-4
34.3	Using the Screen Saver	34-8
34.4	Restrictions	34-12

34.1 Settings Menu

Adjusting the Time

Set a new data to the device/PLC.

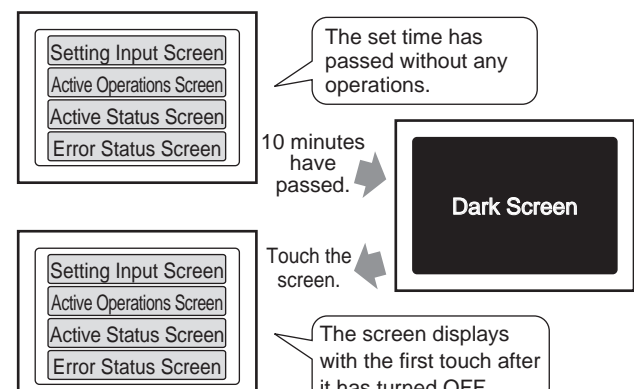
D10	8005
D11	0009
D12	0027
D13	1527



Change

- ☞ Setup Procedure (page 34-5)
- ☞ Introduction (page 34-4)

Using the Screen Saver



10 minutes have passed.

Touch the screen.

The set time has passed without any operations.

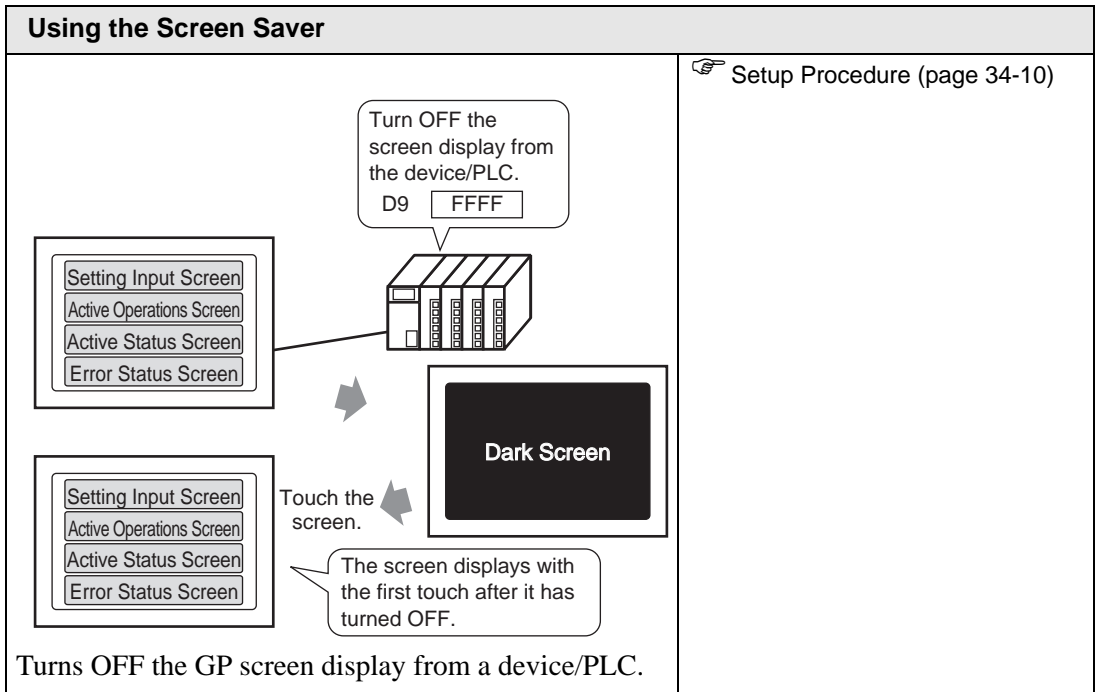
The screen displays with the first touch after it has turned OFF.

Turns OFF the screen display if no interaction occurs for a period of time.

- ☞ Setting Procedure (page 34-8)

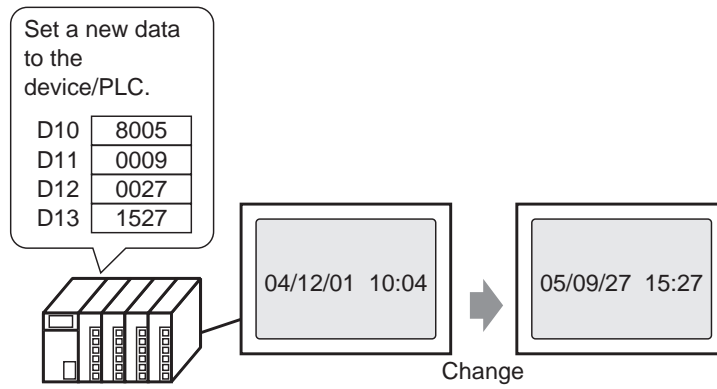
GP-Pro EX Reference Manual

34-2



34.2 Adjusting the Time

34.2.1 Detail

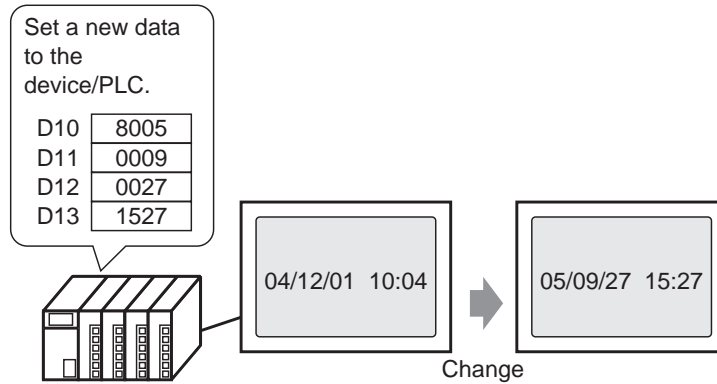


Sets the GP clock data (BCD) from a device/PLC.

34.2.2 Setup Procedure

NOTE

- For more details, refer to the setting guide.
 "5.15.6 [System Settings] Setting Guide ◆ System Area Settings" (page 5-155)



1 Select the [System Settings] tab to display [System Settings].

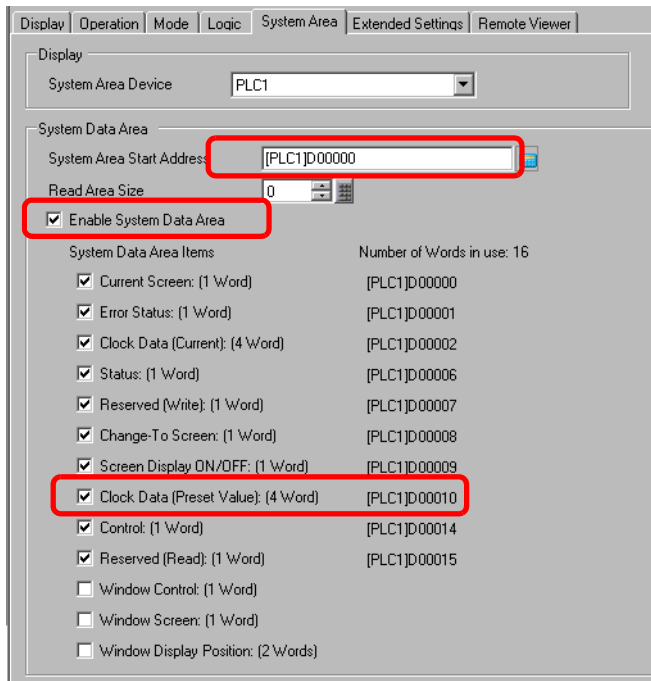

NOTE

- If the [System Settings] tab is not displayed from the [View (V)] menu, point to [Work Space (W)] and select [System Settings Window (S)].

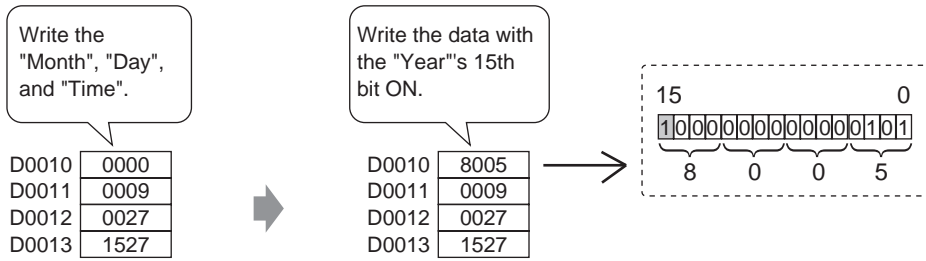
2 On the [Display] menu, select [Display Unit].



3 Select the [System Area] tab. Set the [System Area Start Address] and select the [Enable System Data Area] check box. Select the [Clock Data (Setting Value): (4 Words)] check box.



4 Write clock data to the address displayed in [Clock Data (Setting Value):(4 Words)] with BCD. Clock data is rewritten if the data rewrite flag changes from OFF → ON or ON → OFF. The procedure for writing data is as follows.




NOTE

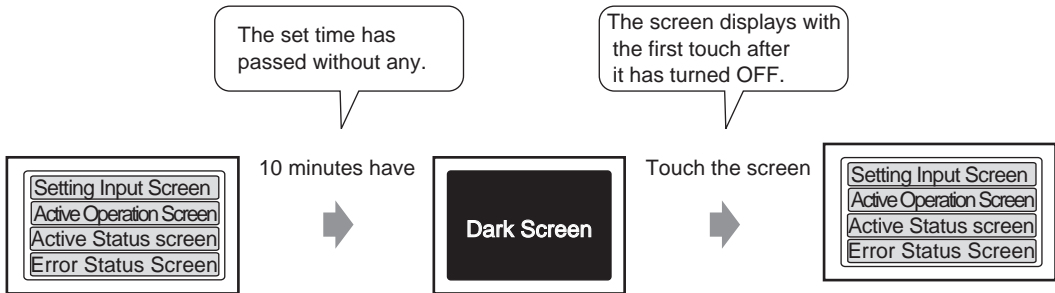
- When the 15th bit is ON, write the data to turn OFF the 15th bit and time is updated.
- You cannot change the "Second" datum. It is reset to "0" when the clock data are rewritten.

34.3 Using the Screen Saver

34.3.1 Turning off the Screen When Not in Use

NOTE

- For more details, refer to the setting guide.
 "5.15.6 [System Settings] Setting Guide ◆ Display" (page 5-130)



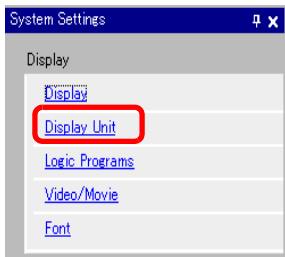
Turns OFF the screen display if no interaction occurs for a period of time.

- 1 Select the [System Settings] tab to display [System Settings].

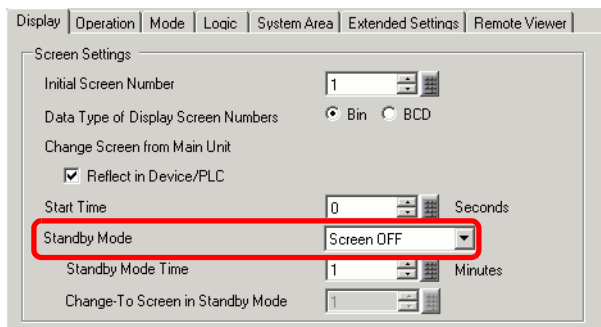

NOTE

- If the [System Settings] tab is not displayed from the [View (V)] menu, point to [Work Space (W)] and select [System Settings Window (S)].

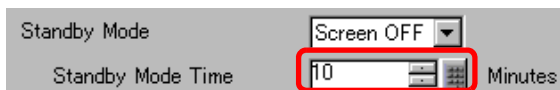
2 On the [Display] menu, select [Display Unit].



3 On the [Display] tab, set the [Standby Mode] to [Screen OFF] in [Screen Settings].



4 In [Standby Mode Time], set the time to wait between the last touch and turning OFF the screen.

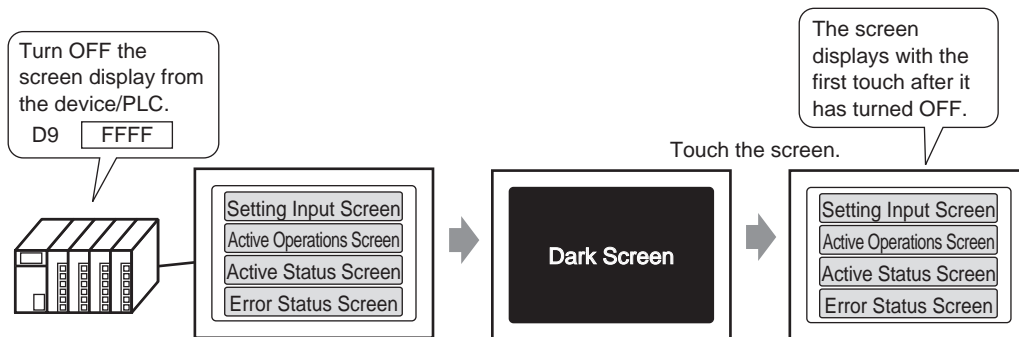


- NOTE**
- If there is no screen operation or alarm occurrence for the [Standby Mode Time], the screen display turns OFF. To display a screen, touch the screen once.

34.3.2 Turning OFF the Screen from a Device/PLC

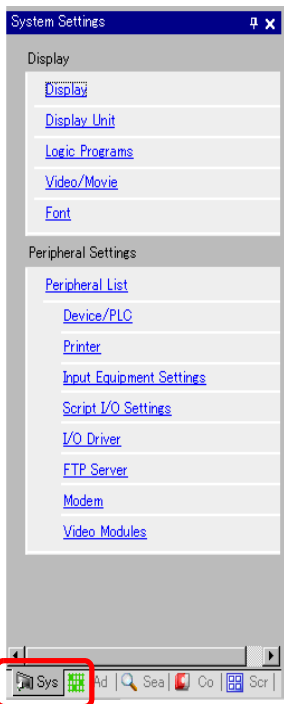
NOTE

- For more details, refer to the setting guide.
 ☞ "5.15.6 [System Settings] Setting Guide ◆ System Area Settings" (page 5-155)



Turns OFF the GP screen display from a device/PLC.

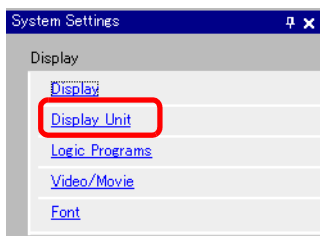
- 1 Select the [System Settings] tab to display [System Settings].



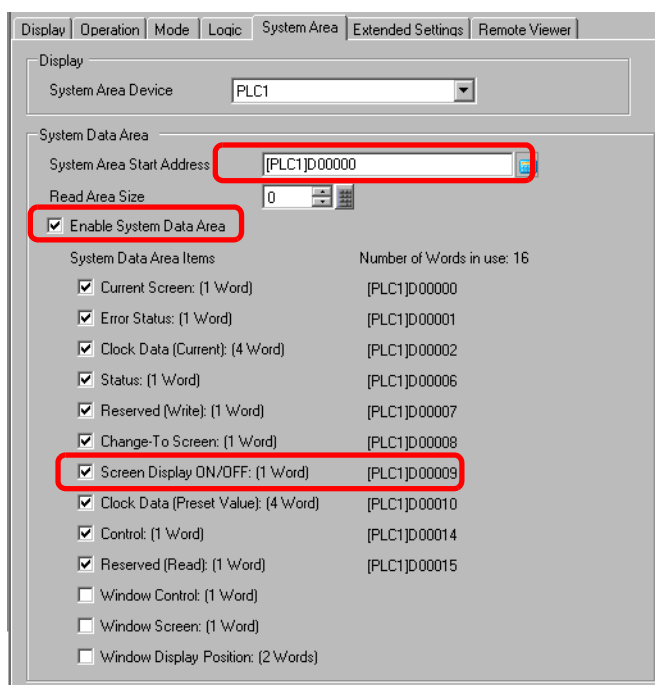
NOTE

- If the [System Settings] tab is not displayed from the [View (V)] menu, point to [Work Space (W)] and select [System Settings Window (S)].

2 On the [Display] menu, select [Display Unit].



3 Select the [System Area] tab. Set the [System Area Start Address]. Set the [System Area Start Address] and select the [Enable System Data Area] check box. Select the [Screen Display ON/OFF: (1 Word)] check box.



4 Write "FFFFh" to the address displayed in [Screen Display ON/OFF: (1 Word)]. The GP screen display turns OFF.

NOTE

- To display a screen, touch the screen once.

34.4 Restrictions

34.4.1 Restrictions for Adjusting the Clock

- Clock data is rewritten if the data rewrite flag changes. (OFF → ON or ON → OFF) You cannot change the "Seconds" data. It is reset to "0" when the clock data is rewritten.

e.g.) 16.10.05 21:57

The current data in the [Clock Data (Setting Value)] address is 0000.

Write the "Month", "Day", and "Time" into the following addresses.

- Write 0010 to [Clock Data (Setting Value)] + 1.
- Write 0016 to [Clock Data (Setting Value)] + 2.
- Write 2157 to [Clock Data (Setting Value)] + 3.

In the [Clock Data (Setting Value)] addresses, turn ON the "Year"'s 15th bit (data 8005) and the clock data is rewritten.

- The clock data's [Data Type] is set to BCD.
- When setting the clock data using the memory link method, use the five addresses 0004 to 0008 to directly store the data, such as year, month, day, hour, and minute, respectively.

34.4.2 Restrictions for Turning OFF the Screen

- With the [Standby Mode Time] settings, if the [Screen Display ON/OFF: (1 Word)] address data is "0000h" and none of the following actions occur set length of time, the screen turns off:
 1. Changing the screen by touch or from the device/PLC.
 2. Operating the screen by touch.
 3. Configure Alarm Messages to display as scroll banners.
 4. Display an error message.
- Set the standby mode time within the range of 1-255.
- The first touch input after the screen display turns OFF turns the screen display back ON.
- When turning OFF the screen display from a device/PLC, the screen display disappears if the value "FFFF" is stored in the address set to [Screen Display On/OFF:(1 Word)]. The screen is displayed when the value is "0h". Values other than "FFFFh" and "0h" are reserved.