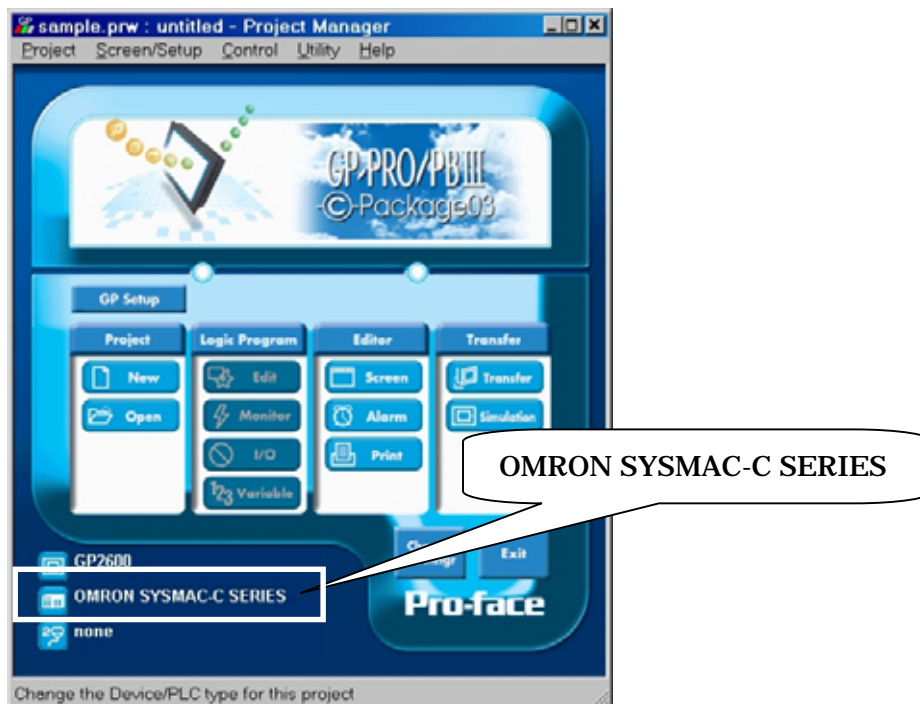


OMRON Corporation PLC SYSMAC C Series Connection

Selecting PLC Type

Start up GP-PRO /PBIII.

Select the following PLC Type when creating the project file.



Communication Setting Sample

■ SYSMAC C Series

GP Setup		PLC Setup	
Baud Rate	19200bps	Baud Rate	19200bps
Data Length	7 bits	Data Length	7 bits
Stop Bit	2 bits	Stop Bit	2 bits
Parity Bit	Even	Parity Bit	Even
Data Flow Control	ER Control		
Communication Format (RS-232C Connection)	RS-232C	Communication Format (RS-232C Connection) *1	RS-232C
Communication Format (RS-422 Connection)	4 Line	Communication Format (RS-422 Connection) *1	RS-422
		Command Level *1	Level 1,2, and 3 are valid
		Relation *1	1 to n
		DC + 5V Power Supply *1	No
		CTS Setup *1	Nomally ON
		Mode Setup *2	Host Link
		Communication *3 Condition Setting Switch	OFF
		Communication Port *4 Function Settings Switch	SW1:OFF SW2:ON
Unit No.	0	Station No.	0

*1 This setup is unavailable for the RS-232C port on CQM1 and CPM2A.

*2 This setup is available only for the RS-232C port on CQM1.

*3 This setup is available only for CPM2A.

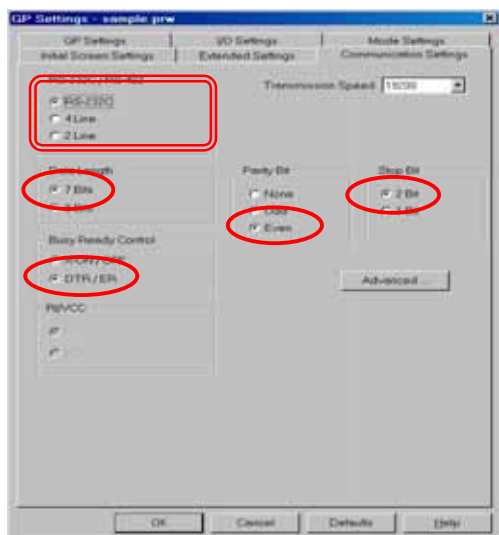
*4 This setup is available only for CPM2C.

Communication Settings [GP]

1 [GP-PRO/PBIII C-Package Setting]

Select [GP Setup] on Project Manager.

1) Communication Settings

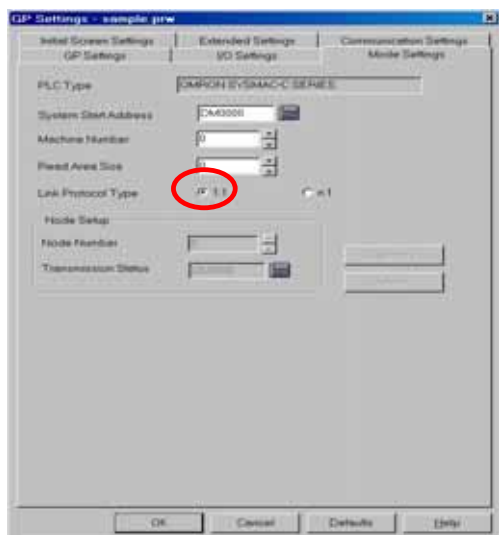


1) Communication Settings

Transmission Speed: 19200bps
Data Length: 7 Bits
Stop Bit: 2 Bits
Parity Bit: Even
Busy Ready Control: DTR / ER
RS-232C/ RS-422
RS-232C Connection: RS-232C
RS-422 Connection: 4 Line

* Select one in .

2) Mode Settings

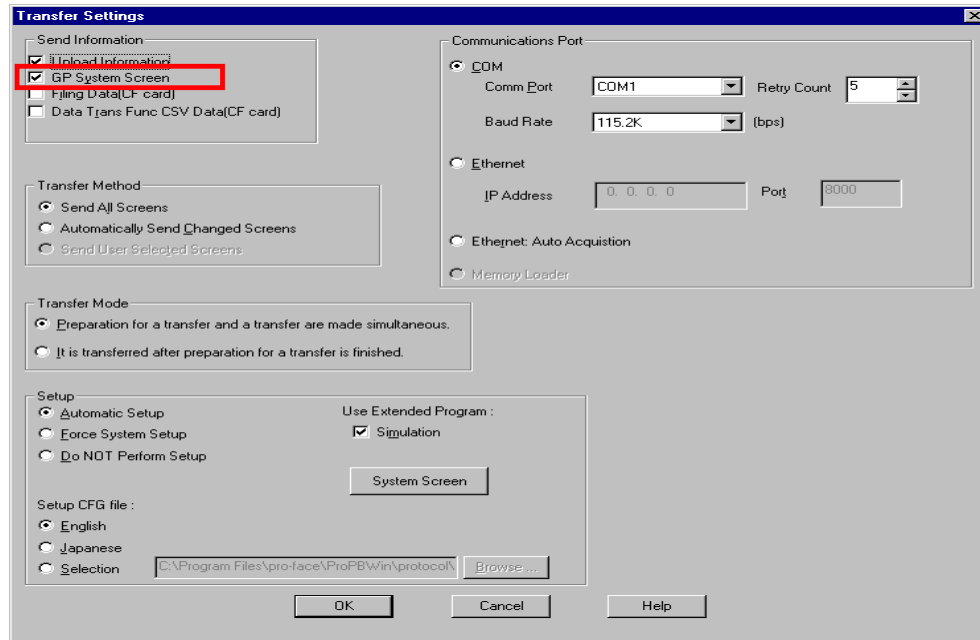


2) Mode Settings

System Start Address: Arbitrary Address
Machine Number: 0
Link Protocol Type: 1:1

Select [Transfer] --> [Setup] --> [Transfer Settings].

3) Transfer Settings



3) Transfer Settings GP System Settings: Checked

Transfer to GP after settings completed.

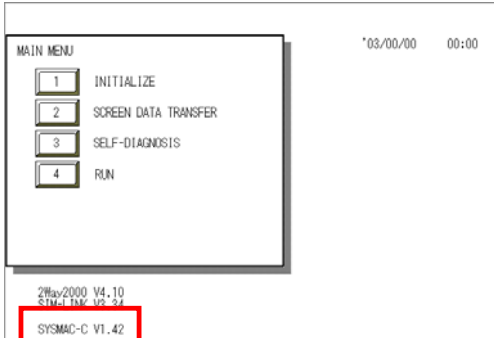
2. [GP Settings]

— Displaying Setting Screen —

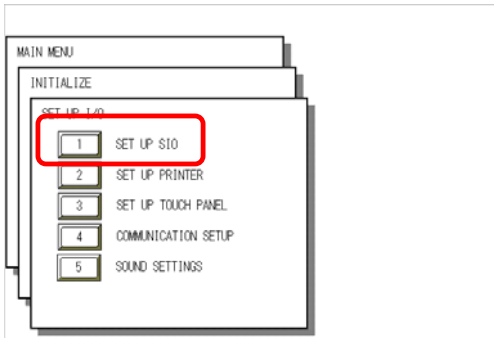
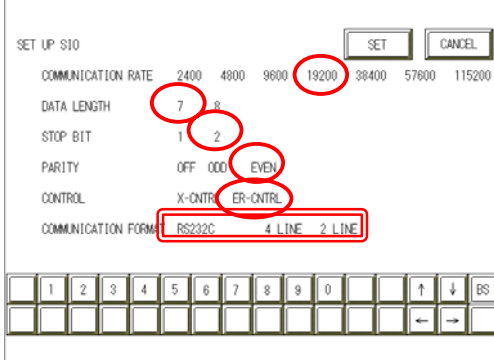
Touch the top left of the screen within 10 second after powering on.

Or touch the top right and the bottom right of the screen at the same time. Keep 2 points touched and touch the bottom left. The menu bar will display on the bottom of the screen.

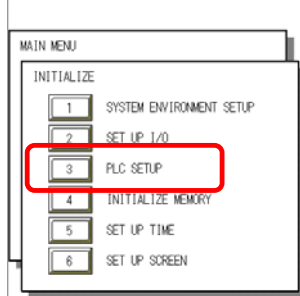
Then touch [Offline].

	<h3>1) Checking GP Type</h3> <p>If you have selected OMRON SYSMAC-C Series, following will be shown.</p> <p>“SYSMAC-C”</p>
---	--

2) Communication Settings

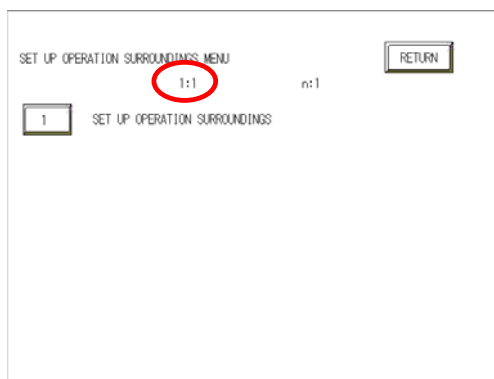
	<h3>2) Communication Settings</h3> <p>[MAIN MENU] ↓ [INITIALIZE] ↓ [SET UP I/O] ↓ [SET UP SIO]</p>
	<p>Communication Rate: 19200bps Data Length: 7 Bits Stop Bit: 2 Bits Parity: Even Control: ER Cntrl Communication Format RS-232C Connection: RS-232C RS-422 Connection: 4 Line</p> <p>* Select one in <input type="text"/>.</p>

3) Setting up Operation Surroundings

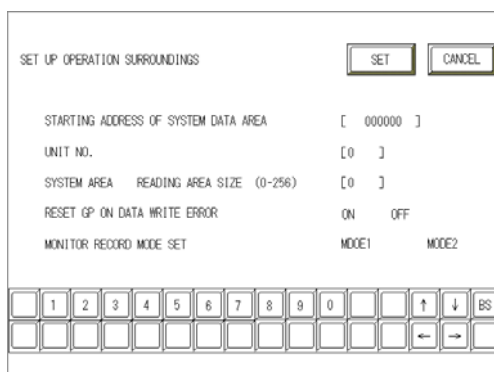


3) Setting up Operation Surroundings

[MAIN MENU]
↓
[INITIALIZE]
↓
[PLC SETUP]
↓
[PLC SETUP]



SET UP OPERATION SURROUNDINGS MENU:
1:1



Starting Address of System Data Area:
Arbitrary Address
Unit No.: 0

Communication Settings [PLC]

1. RS-232C Port on CPU Unit

Word Address	Value	Setting Contents
DM6645	0001 (HEX)	Depending on the settings of DM6646 Mode Setup: Host Link
DM6646	0304 (HEX)	Baud Rate: 19200bps Data Length: 7 Bits Stop Bit: 2 Bits Parity Bit: Even
DM6648	0000 (HEX)	Host Link Station No. Settings: Station No. 0

* Please make sure to turn OFF the mode setup switch SW5 on the CPU unit.

* To connect CPM2A, turn OFF the Communication Condition Setting Switch.

2. RS-232C Conversion Adaptor CPM1-CIF01

Word Address	Value	Setting Contents
DM6650	0001 (HEX)	Depending on the settings of DM6651 Mode Setup: Host Link
DM6651	0304 (HEX)	Baud Rate: 19200bps Data Length: 7 Bits Stop Bit: 2 Bits Parity Bit: Even
DM6653	0000 (HEX)	Host Link Station No. Settings: Station No. 0

* Connect the conversion adaptor to the peripheral port on the CPU unit.

* Please make sure to set the mode setting switch on the conversion adaptor to "HOST".

3. RS-422 Conversion Adaptor CPM1-CIF11

Word Address	Value	Setting Contents
DM6650	0001 (HEX)	Depending on the settings of DM6651 Mode Setup: Host Link
DM6651	0304 (HEX)	Baud Rate: 19200bps Data Length: 7 Bits Stop Bit: 2 Bits Parity Bit: Even
DM6653	0000 (HEX)	Host Link Station No. Settings: Station No. 0

* Connect the conversion adaptor to the peripheral port on the CPU unit.

* Please turn ON the termination resistance switch on the conversion adaptor.

4. Adaptor Unit CPM2C-CIF01 (RS-232C Port Connection)

Word Address	Value	Setting Contents
DM6645	0001 (HEX)	Depending on the settings of DM6646 Mode Setup: Host Link
DM6646	0304 (HEX)	Baud Rate: 19200bps Data Length: 7 Bits Stop Bit: 2 Bits Parity Bit: Even
DM6648	0000 (HEX)	RS-232C Port Station No. Settings: Station No. 0

* Connect the conversion adaptor to the peripheral port on the CPU unit.

* Set SW1 and SW2 of "Communication Port Function Settings Switch Setup" as below.

SW1 : OFF

SW2 : ON

5. Adaptor Unit CPM2C-CIF01 (Peripheral Port Connection)

Word Address	Value	Setting Contents
DM6650	0001 (HEX)	Depending on the settings of DM6651 Mode Setup: Host Link
DM6651	0304 (HEX)	Baud Rate: 19200bps Data Length: 7 Bits Stop Bit: 2 Bits Parity Bit: Even
DM6653	0000 (HEX)	Host Link Station No. Settings: Station No. 0

* Connect the conversion adaptor to the peripheral port on the CPU unit.

* Set SW1 and SW2 of "Communication Port Function Settings Switch Setup" as below.

SW1 : OFF

SW2 : ON