

OMRON Corporation PLC

SYSMAC C Series (1 to n) Connection

Selecting PLC Type

Start up GP-PRO /PBIII.

Select the following PLC Type when creating the project file.



Communication Setting Sample

■ SYSMAC-C Series (CQM1H-CPU51/CQM1H-CPU61) <1 to n Communication>

GP/GLC Setup		PLC Setup	
Baudrate	9600 bps	Baud Rate	9600 bps
Data Length	7 bits	Data Length	7 bits
Stop Bit	2 bits	Stop Bit	2 bits
Parity Bit	Even	Parity Bit	Even
Data Flow Control	ER Control	-	-
Communication Format	4 Line	2 wire/4 wire [WIRE]	4 Wire
Unit No.	0	Station Number *1	0
-	-	Communication Conditions Format Settings	0
-	-	Serial Communication Mode Settings	Host Link
-	-	Termination Resistance Switch [TERM]	Terminal Station: ON Intermediate

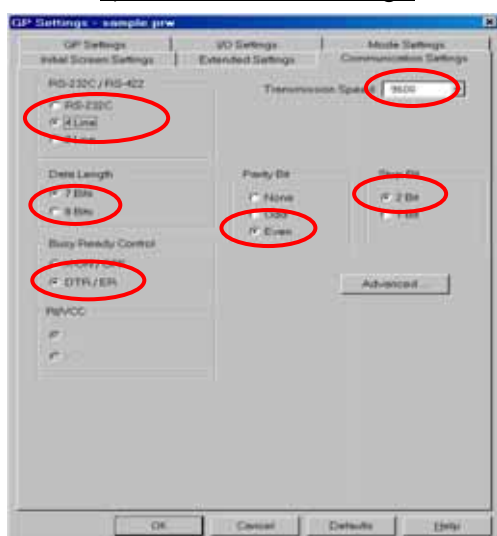
*1 Although No.00 to No.31 can be used for PLC station Number, the maximum number of PLCs that can communicate with the GP on the 1 to n communication basis is eight. Therefore, set up PLC station Numbers within the range of 00 to 07.

Communication Settings [GP]

1 [GP-PRO/PB C-Package Setting]

Select [GP Setup] on Project Manager.

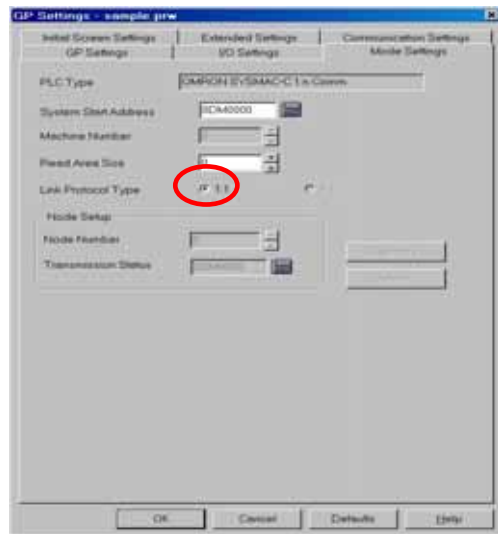
1) Communication Settings



1) Communication Settings

Transmission Speed: 9600bps
Data Length: 7 Bits
Stop Bit: 2 Bits
Parity Bit: Even
Busy Ready Control: DTR / ER
RS-232C/ RS-422
RS-422 Connection: 4 Line

2) Mode Settings



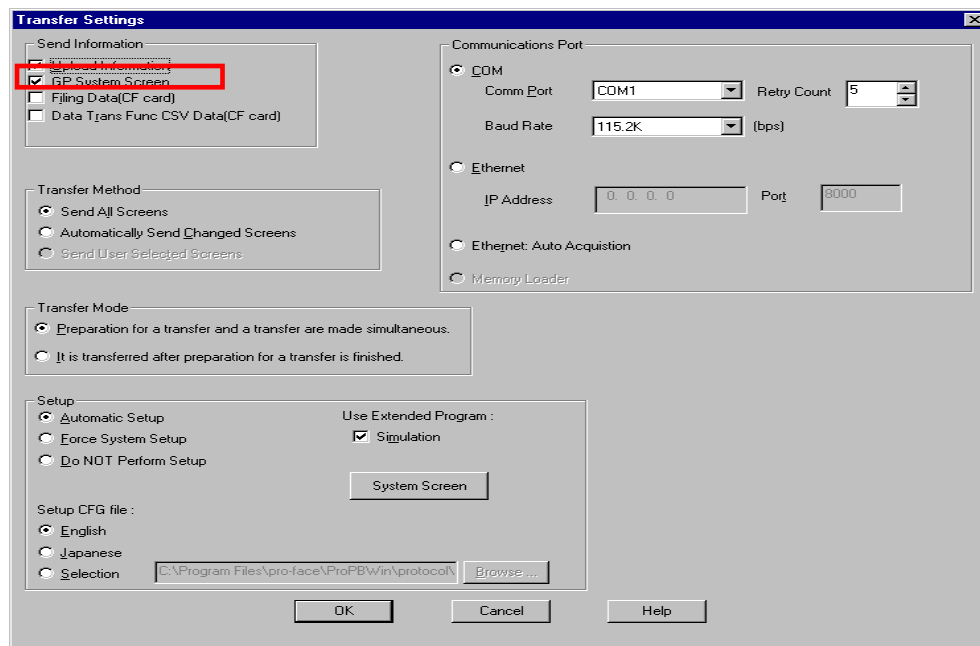
2) Mode Settings

System Start Address: Arbitrary Address

Link Protocol Type: 1:1

Select [Transfer] --> [Setup] --> [Transfer Settings].

3) Transfer Settings



3) Transfer Settings

GP System Settings: Checked

Transfer to GP after settings completed.

2 [GP Settings]

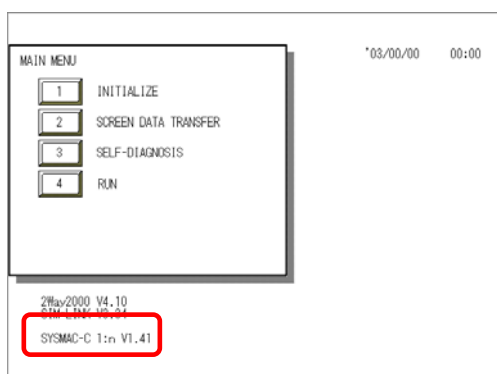
- Displaying Setting Screen -

Touch the top left of the screen within 10 second after powering on.

Or touch the top right and the bottom right of the screen at the same time. Keep 2 points touched and touch the bottom left. The menu bar will display on the bottom of the screen.

Then touch [Offline].

1) Checking GP Type

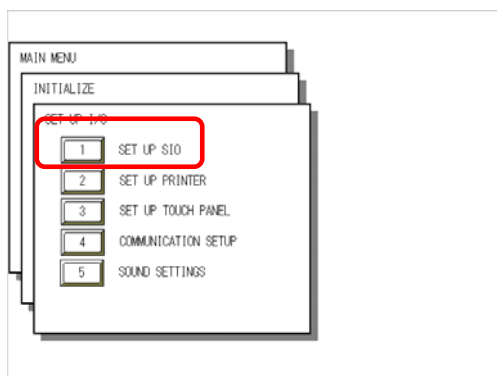


1) Checking GP Type

If you have selected OMRON SYSMAC-C 1:n Comm., following will be shown.

“SYSMAC-C 1:n”

2) Communication Settings



2) Communication Settings

[MAIN MENU]



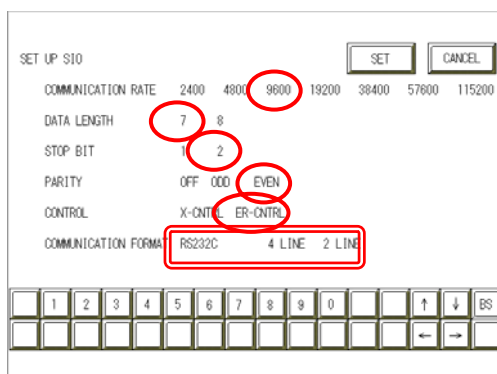
[INITIALIZE]



[SET UP I/O]



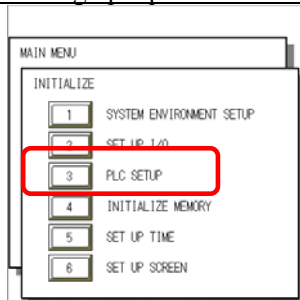
[SET UP SIO]



Communication Rate: 9600bps
Data Length: 7 Bits
Stop Bit: 2 Bits
Parity: Even
Control: ER Cntrl
Communication Format
RS-422 Connection: 4 Line

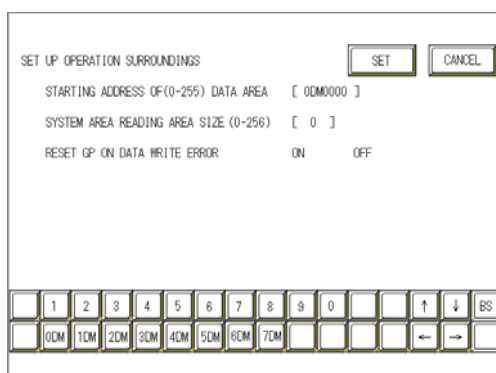
* Select one in .

3) Setting up Operation Surroundings



3) Setting up Operation Surroundings

[MAIN MENU]
↓
[INITIALIZE]
↓
[PLC SETUP]
↓
[PLC SETUP]



Starting Address of System Data Area:
Arbitrary Address

Communication Settings [PLC]

SYSMAC-CQM1H Series

Word Address	Value	Setting Details
DM6650 *1	0001 (HEX)	Depending on the settings of DM6651 Mode Specification: Host Link
DM6651	0304 (HEX)	Baud Rate: 19200bps Data Length: 7 Bits Stop Bit: 2 Bits Parity Bit: Even
DM6653	0000 (HEX)	Host Link Station Number Settings: 0 *2

*1 Leave the serial communication mode setting DM6550(Bit 12 to Bit 15) set to the default setting, 0.

*2 Although No. 00 to 31 can be used for SYSMAC-CQM1H station numbers, the maximum number of PLCs that can communicate with the GP on the 1 to n Communication basis is eight. Therefore, set up PLC station numbers within the range of 00 to 07.

- Set the 2-wire/4-wire selector switch [WIRE] on the PLC to the “4” position.
Set the termination resistance switch to ON in case of a terminal station, or OFF in case of an intermediate station.