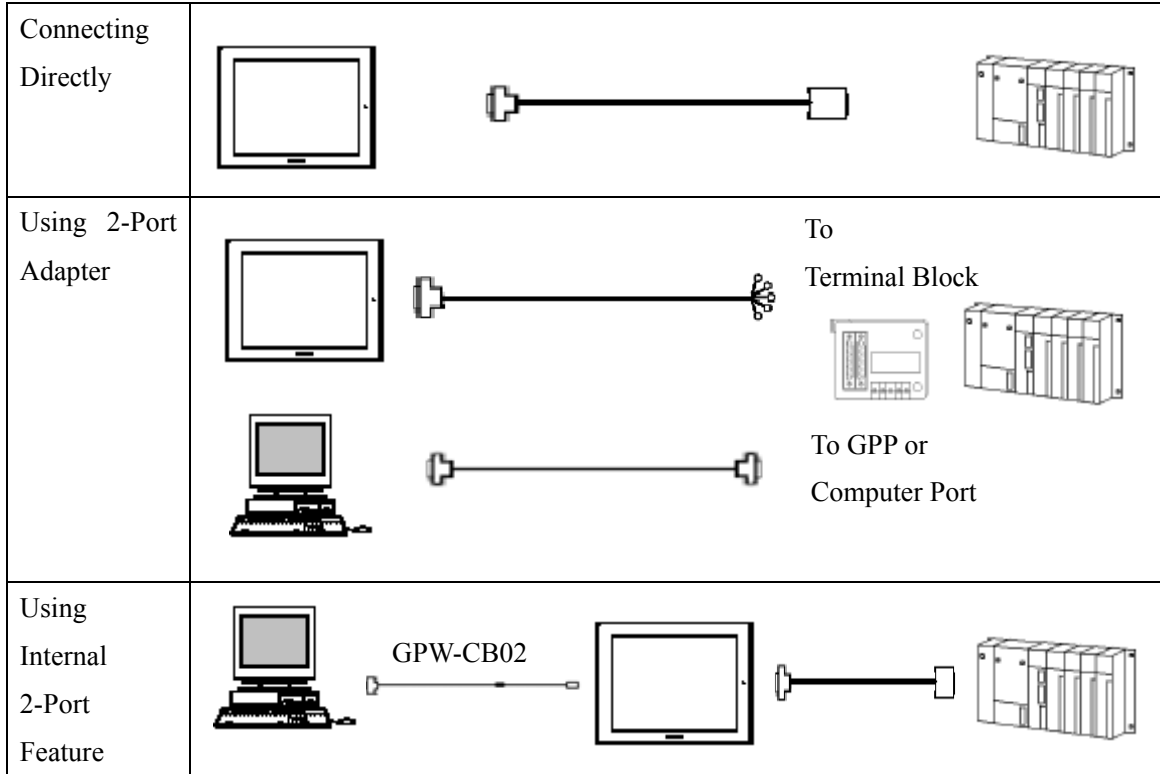


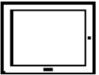
Mitsubishi <9> Mitsubishi Electric Corporation

QnA Series CPU Direct Connection

System Structure






GP





Machine 	Model	Remark
GP	GP70 Series GP77/77R Series GP2000 Series	Excepting for handy types. The internal 2-Port feature is supported by only GP77/77R Series and GP2000 Series.
GLC	GLC2000 Series	2-Port Adapter and the internal 2-Port feature are not supported.

PLC




[Connecting Directly]

CPU 	Communication Method	Connection Cable 	GP 
Q4A, Q2A, Q2AS, Q2AS-S1, Q4AR	RS-422	Connection Method [1]	
	RS-232C		

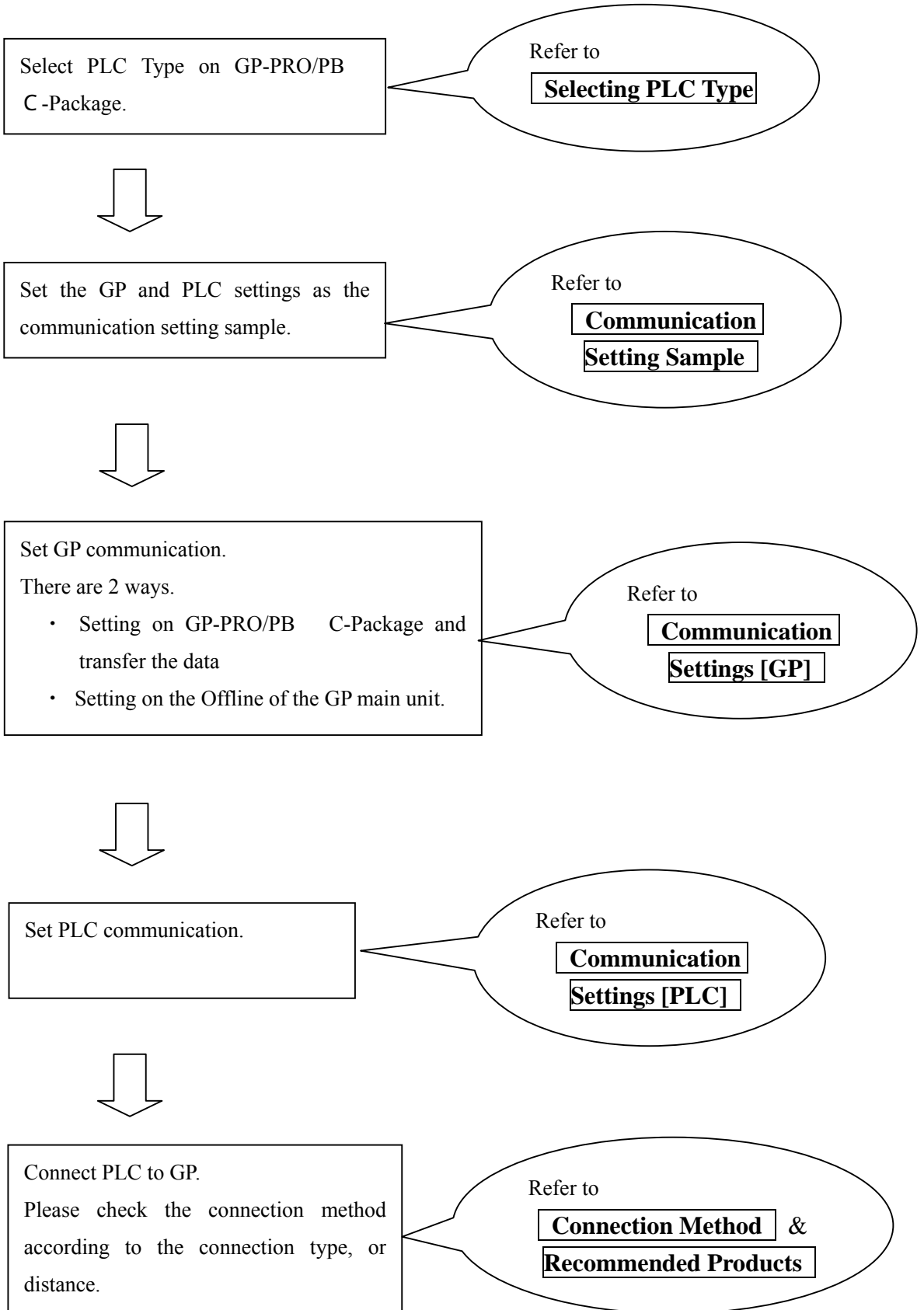
[Using 2-Port Adapter]

CPU 	Adapter 	Communication Method	Connection Cable 	GP 
Q4A, Q2A, Q2AS-S1, Q2ASH	GP070-MD11	RS-422	Connection Method [2]	

[Using Internal 2-Port Feature]

CPU 	Communication Method	Connection Cable 	GP 
Q4A, Q2A, Q2AS-S1, Q2ASH	RS-232C	Connection Method [1]	GP77/77R Series GP2000 Series
	RS-422		

Procedure to Connect PLC



Selecting PLC Type

Start up GP-PRO /PBIII.

Select the following PLC Type when creating the project file.



Communication Setting Sample

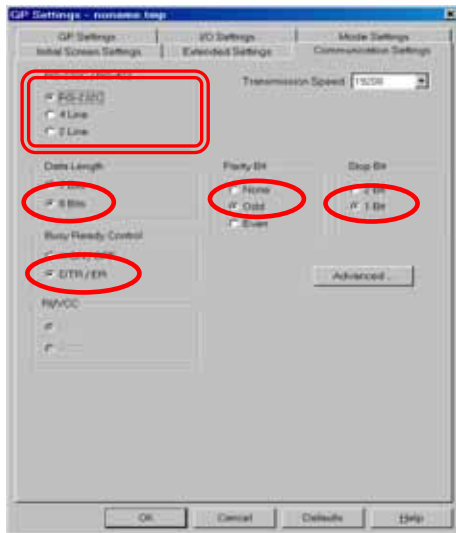
GP Setup		PLC Settings
Baud Rate	19200 bps	---
Data Length	8 bits	---
Stop Bit	1 bit	---
Parity Bit	Odd	---
Data Flow Control	ER Control	---
Communication Format *1 (RS-232C)	RS-232C	---
Communication Format (RS-422)	4-wire type	---
Unit No.	0 (fixed)	---

*1 For Communication Format, select RS-232C when using GP430-IP10-O, or select 4-wire type cable when using another cable.

Communication Settings [GP]

1 [GP-PRO/PB C-Package Setting]
 Select [GP Setup] on Project Manager.

1) Communication Settings

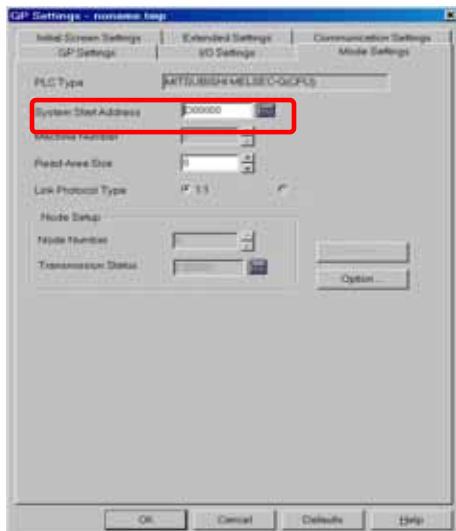


1) Communication Settings

Transmission Speed : 19200bps
 Data Length : 8 Bits
 Stop Bit: 1 Bit
 Parity Bit: Odd
 Busy Ready Control : DTR / ER
 RS-232C / RS-422 :
 Using GP430-IP10-O : RS-232C
 Using Other Cable: 4 Line

* Select one in .

2) Mode Settings

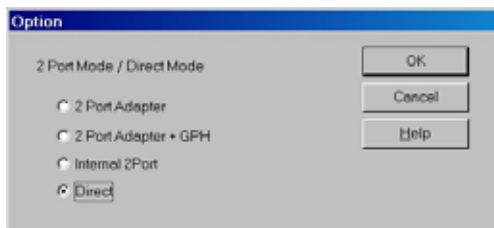


2) Mode Settings

System Start Address: Arbitrary Address

Select [Option...].

3) 2-Port Mode/Direct Mode Settings



3) 2-Port Mode/Direct Mode Settings

Using GP430-IP10-O or User-Created Cable:
 Direct
 Using 2-Port Adapter : 2-Port Adapter
 Using Internal 2-Port Feature:
 Internal 2-Port

Select [Transfer] --> [Setup] --> [Transfer Settings].

4) Transfer Settings

Transfer Settings

Send Information

- Upload Information
- GP System Screen
- Filing Data(CF card)
- Data Trans Func CSV Data(CF card)

Transfer Method

- Send All Screens
- Automatically Send Changed Screens
- Send User Selected Screens

Transfer Mode

- Preparation for a transfer and a transfer are made simultaneous.
- It is transferred after preparation for a transfer is finished.

Setup

- Automatic Setup
- Force System Setup
- Do NOT Perform Setup

Use Extended Program :

- Simulation

System Screen

Setup CFG file :

- English
- Japanese
- Selection

C:\Program Files\pro-face\ProPBWin\protocol\ Browse...

OK Cancel Help

Communications Port

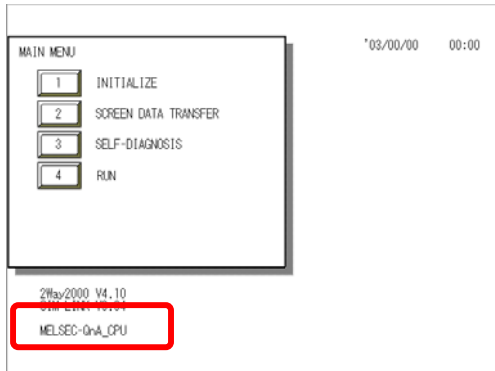
- COM
- Comm Port: COM1 Retry Count: 5
- Baud Rate: 115.2K (bps)
- Ethernet
- IP Address: 0.0.0.0 Port: 8000
- Ethernet: Auto Acquisition
- Memory Loader

4) Transfer Settings GP System Settings: Checked

Transfer to GP after settings completed.

2 [GP Settings]

1) Checking GP Type

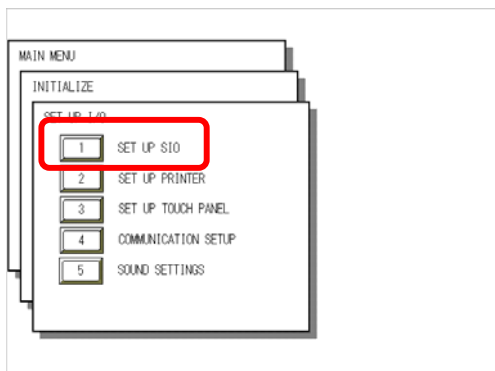


1) Checking GP Type

If you have selected Mitsubishi MELSEC-QnA (CPU), the following will be shown.

“MELSEC-QnA_CPU”

2) Communication Settings



2) Communication Settings

[MAIN MENU]

↓

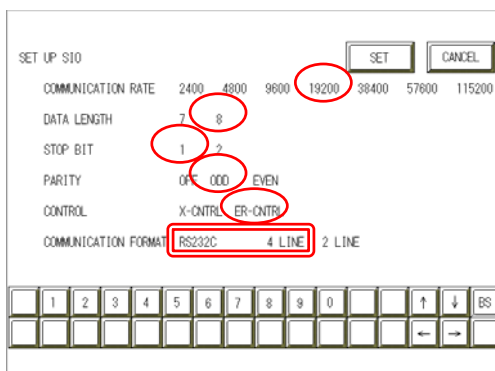
[INITIALIZE]

↓

[SET UP I/O]

↓

[SET UP SIO]



Communication Rate: 19200bps

Data Length: 8 Bits

Stop Bit: 1 Bit

Parity: Odd

Control: ER Cntrl

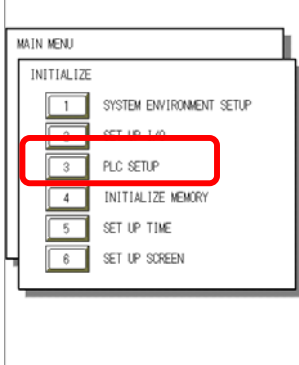
Communication Format

Using GP430-IP10-O: RS-232C

Using other cable: 4 Line

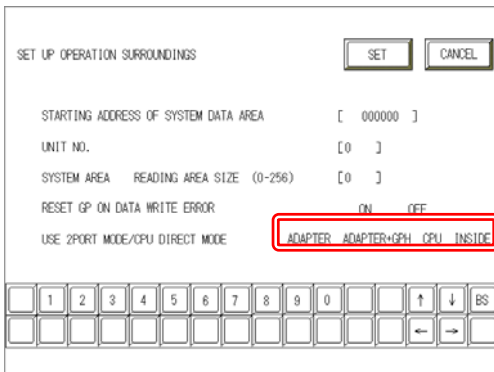
* Select one in .

3) Setting up Operation Surroundings



3) Setting up Operation Surroundings

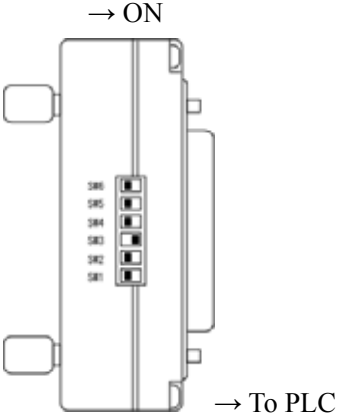
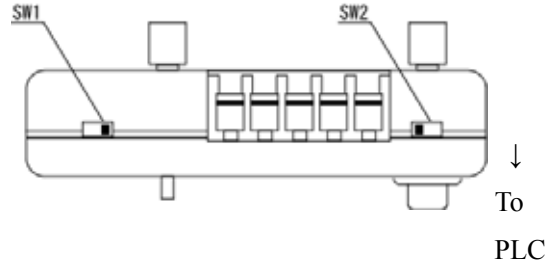
[MAIN MENU]
↓
[INITIALIZE]
↓
[PLC SETUP]
↓
[PLC SETUP]



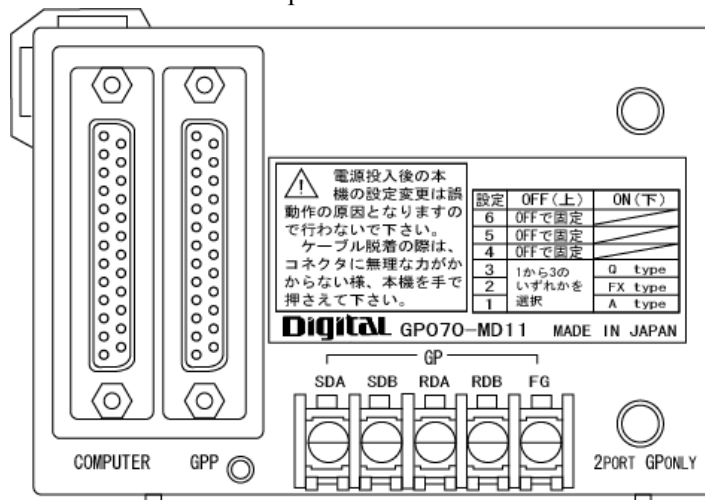
Starting Address of System Data Area:
Arbitrary Address
Unit No.: 0
Use 2-Port Mode/CPU Direct Mode
GP430-IP11-O Cable/User-Created Cable:
CPU
2-Port Adapter : Adapter
Internal 2-Port Adapter: Inside

* Select one in .

3 [2-Port Adapter Settings]

<p><u>1) PLC Type Settings</u></p> 	<p><u>1) PLC Type Settings</u></p> <p>SW 6: OFF SW 5: OFF SW 4: OFF SW 3: ON SW 2: OFF SW 1: OFF</p>
<p><u>2) Device/PLC Settings</u></p> 	<p><u>2) Device/PLC Settings</u></p> <p>SW 1: Connecting Peripheral Device RS-422 Cable: Right (GPP) RS-232C Cable : Left (COMPUTER)</p> <p>SW 2: Setting to connect any peripheral devices</p> <p>GP Only (No Peripheral Device): Right (GP ONLY)</p> <p>GP and Peripheral Device: Left (2-Port)</p>

<Reference> 2-Port Adapter


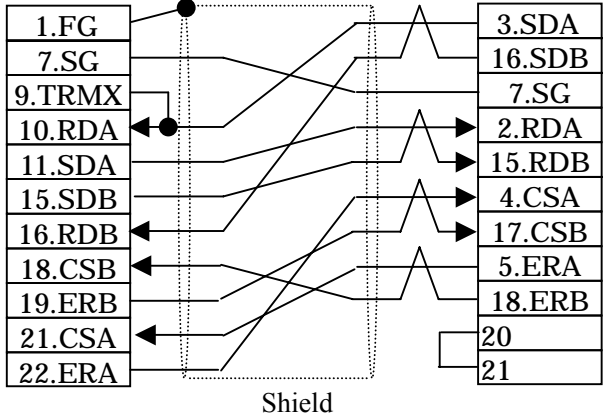


Communication Settings [PLC]

There are no items to set on the PLC.

Connection Method

[Connecting Directly / Connecting with Internal 2-Port Feature]

Type	Connection Method	Distance
Using GP430-IP10-O		5m
Creating Cable	<p>To GP (25p Male) To PLC (25p Male)</p>  <p style="text-align: center;">Shield</p>	<p>Within 5m</p> <p>Supporting Models: GP2000 / GLC2000 Series</p>

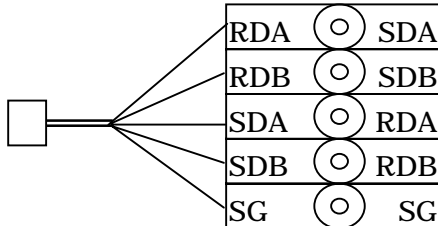
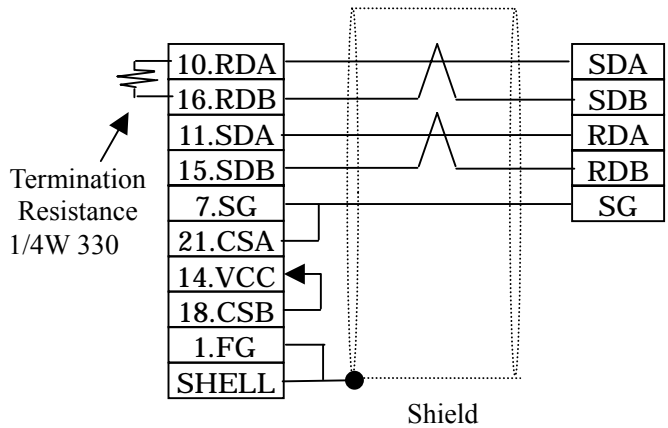


This wiring is available for only GP2000 Series / GLC2000 Series.

Recommended Products

Connector/Cover for GP	D-sub 25 pin Plug	XM2A-2501 <OMRON Co.>
	Cover for D-sub 25 pin	XM2S-2511 <OMRON Co.>
	Jack Screw	XM2Z-0071 <OMRON Co.>
Cable	CO-MA-VV-SB5P × 28AWG <Hitachi Cable Ltd.>	
Setscrew	Metric Coarse Screw Tread : M2.6 × 0.45	

[Connecting via 2-Port Adapter]

Type	Connection Method	Distance
Using GP070-MDCB11	<p>Cable with 5 wires Adapter with 5 contacts</p>  <p>Caution Cross the signal names of wires and ones of terminal block contacts.</p>	5m
Creating Cable	<p>To GP (25p Male) Adapter Terminal Block</p>  <p>Termination Resistance 1/4W 330</p> <p>Caution RS-422 Connector Terminal Adapter (GP070-CN10-O) cannot be used on the GP.</p>	Within 600m

Recommended Products

Connector/Cover for GP	D-sub 25 pin Plug	XM2A-2501 <OMRON Co.>
	Cover for D-sub 25 pin	XM2S-2511 <OMRON Co.>
	Jack Screw	XM2Z-0071 <OMRON Co.>
Terminal on Adapter	Equivalent to V1.25-MS3 <J.S.T. Mfg. Co., Ltd.>	
Cable	CO-SPEV-SB (A) 3PX0.5SQ <Hitachi Cable Ltd.>	
Setscrew	Metric Coarse Screw Tread : M2.6 × 0.45	